

8



- 塑膠螺絲
Plastic Screws
- 螺絲帽蓋
Screw Caps & Bonnets
- 塑膠螺帽
Plastic Nuts
- 止付螺絲
Set Screws
- 手轉螺絲
Thumb Screws
- PC板拉柄
Card Puller
- PC板導槽
PCB Card Guides

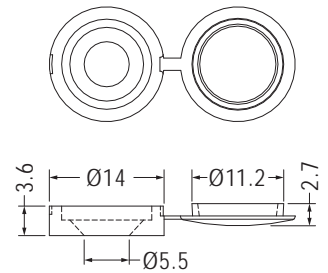
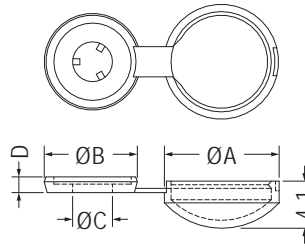


螺絲帽蓋 SCREW CAP

用途：用於螺絲凸出之保護，美觀不刮手，避免不當之拆卸。



- Material: Nylon 66 (UL)
- Flame Class: 94V-2/94V-0
- Color: Natural/Black
- Unit: mm

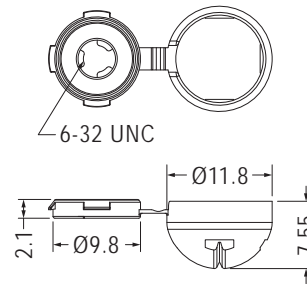


Part No.	A	B	C	D	Package
SCW-1	9.8	8.0	3.3	1.3	1000
SCW-2	13.3	11.6	4.3	1.4	

Part No.	Package
SCW-3	1000



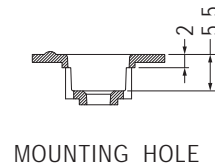
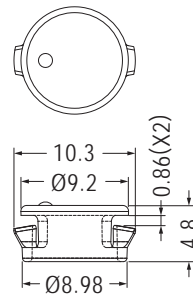
- Material: Nylon 66 (UL)
- Flame Class: 94V-2/94V-0
- Color: Natural/Black
- Unit: mm



Part No.	Package
SCW-5	1000



- Material: Nylon 66 (UL)
- Flame Class: 94V-2/94V-0
- Color: Natural/Black
- Unit: mm



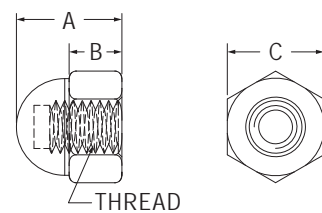
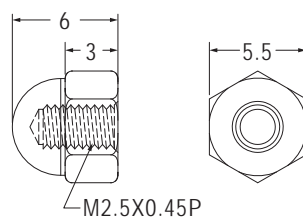
Part No.	Package
SCWA-6	1000

螺絲帽蓋 SCREW BONNET

用途：配合一般螺絲，作為螺絲蓋使用。



- Material: Nylon 66 (UL)
- Flame Class: 94V-2/94V-0
- Color: Natural/Black
- Unit: mm



Part No.	Package
MP-2.5	1000

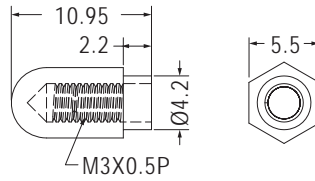
Part No.	A	B	C	Thread	Package
MP-3	6.0	3.0	5.5	M3X0.5P	1000
MP-4	8.0	4.0	7.7	M4X0.7P	
MP-6	11.9	8.5	10.0	M6X1.0P	

螺絲帽蓋 SCREW BONNET

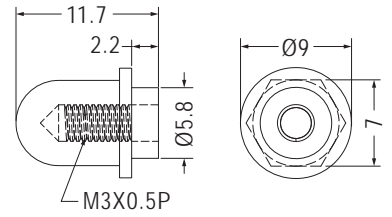
用途：配合一般螺絲，作為螺絲蓋使用。



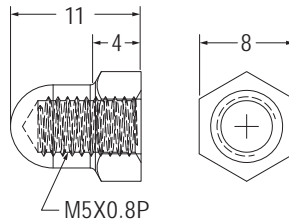
- Material: Nylon 66 (UL)
- Flame Class: 94V-2/94V-0
- Color: Natural/Black
- Unit: mm



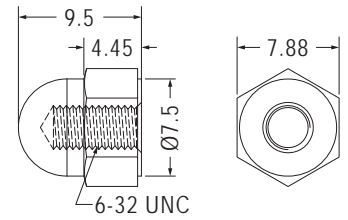
Part No.	Package
MP-5	1000



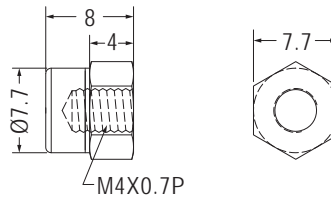
Part No.	Package
MP-26	1000



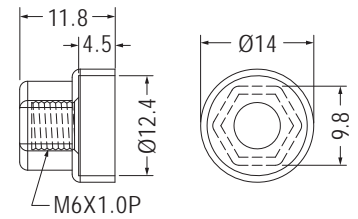
Part No.	Package
MP5-1	1000



Part No.	Package
MP-632	1000

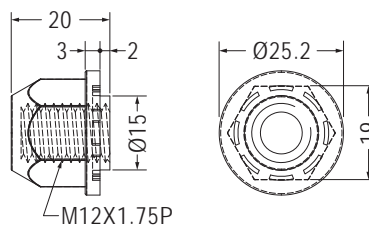
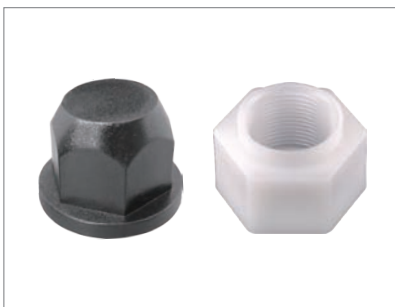


Part No.	Package
MP-4-1	1000

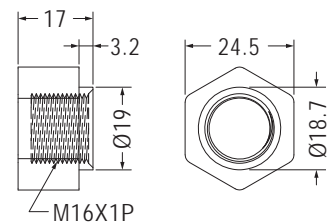


- Material: PBT
- Color: Black

Part No.	Package
MP6-1	1000

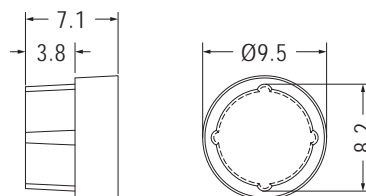


Part No.	Package
MP-12	250



- Material: POM
- Color: Natural

Part No.	Package
★ MP16-1	250



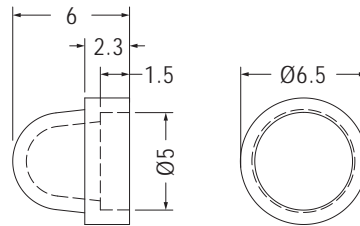
Part No.	Package
SWVB-1	1000

螺絲帽蓋 SCREW BONNET

用途：配合一般螺絲，作為螺絲蓋使用。



- Material: Nylon 66 (UL)
- Flame Class: 94V-2/94V-0
- Color: Natural/Black
- Unit: mm

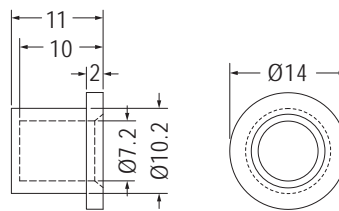


Part No.	Package
SWV-4	1000

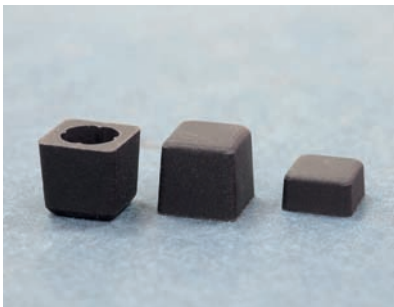


- Material: Silicon Rubber
- Color: Black
- Unit: mm

用途：配合一般螺絲M8，作為螺絲蓋使用。

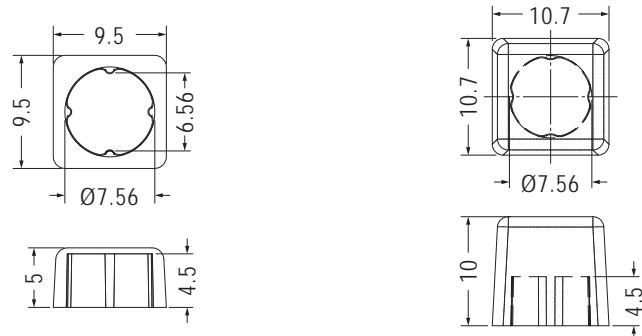


Part No.	Package
TF-250	1000



- Material: Silicon Rubber
- Color: Black
- Unit: mm

用途：配合一般螺絲，作為螺絲蓋使用。



Part No.	Package
EMC-40	1000

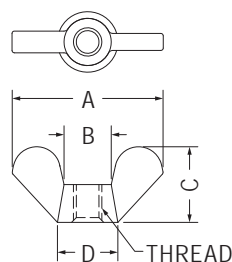
Part No.	Package
EMC-41	1000

翼型螺帽 WING NUT

用途：配合一般螺絲或塑膠螺絲使用。



- Material: Nylon 66 (UL)
- Flame Class: 94V-2/94V-0
- Color: Natural/Black
- Unit: mm



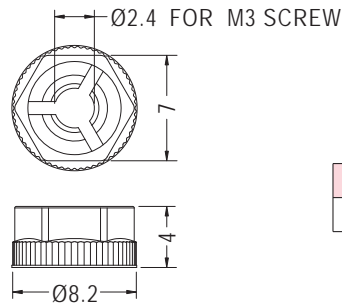
Part No.	A	B	C	D	Thread	Package
SMO-3	15.96	5.0	8.0	6.4	M3X0.5P	1000
SMO-4	21.5	8.0	10.1	10.0	M4X0.7P	
SMO-632	22.0	8.0	10.5	10.0	6-32 UNC	
SMO-832	21.0	8.0	10.0	10.0	8-32 UNC	

塑膠螺帽 NUT

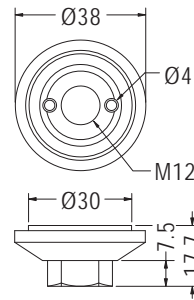
用途：配合一般螺絲或塑膠螺絲使用。



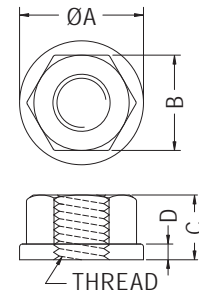
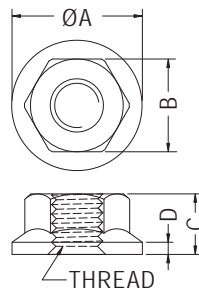
- Material: Nylon 66 (UL)
- Flame Class: 94V-2/94V-0
- Color: Natural/Black
- Unit: mm



Part No.	Package
MOA3	1000



Part No.	Package
CAM-12	100

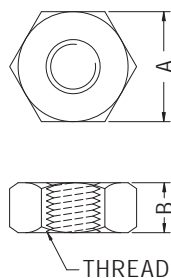


Part No.	A	B	C	D	Thread	Package
MO-3	8.5	5.4	3.2	0.8	M3X0.5P	1000
MO-3-3.7	8.5	5.4	3.7	0.8	M3X0.5P	
MO-4	9.7	6.9	4.5	0.9	M4X0.7P	
MO-632	10.6	7.8	4.2	1.0	6-32 UNC	

Part No.	A	B	C	D	Thread	Package
MO-6G-68	13.0	10.0	6.8	1.65	M6X1.0P	2000
MO-8G-85	17.0	13.0	8.5	1.9	M8X1.25P	1000



- Material: Nylon 66 (UL)/PC (UL)
- Flame Class: 94V-2/94V-0
- Color: Natural
- Unit: mm



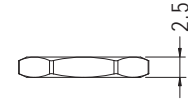
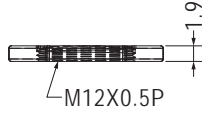
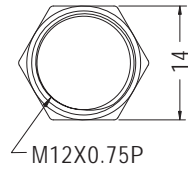
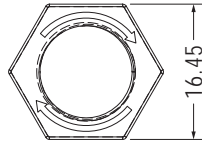
Part No.	A	B	Thread	Package
M-2	3.95	1.4	M2X0.4P	2000
M-2L	3.95	3.0	M2X0.4P	
M-2.5	5.0	2.0	M2.5X0.45P	
M-2.6	5.0	2.0	M2.6X0.45P	
M-3	5.5	2.7	M3X0.5P	
M-3S	5.4	2.4	M3X0.5P	1000
M-3.5	5.9	2.8	M3.5X0.6P	
M-4	6.9	3.3	M4X0.7P	
M-4F	7.0	2.5	M4X0.7P	
M-5	8.0	4.4	M5X0.8P	
M-6	10.0	5.0	M6X1.0P	
S4-40	6.4	2.5	4-40 UNC	1000
S6-32	7.9	3.2	6-32 UNC	

塑膠螺帽 NUT

用途：配合鏡頭調整或塑膠螺絲使用。



- Material: Nylon 66 (UL)
- Flame Class: 94V-2/94V-0
- Color: Natural/Black
- Unit: mm

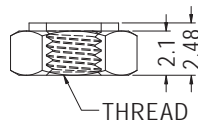


Part No.	Package
M12-2	2000

Part No.	Package
MOC-12	1000

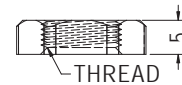
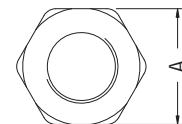
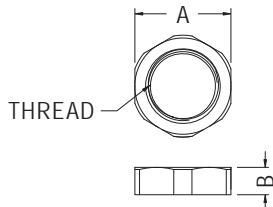


- Material: Nylon 66 (UL)
- Flame Class: 94V-2/94V-0
- Color: Natural/Black
- Unit: mm



用途：配合一般螺絲或塑膠螺絲使用。

Part No.	Thread	Package
MOB-2.5	M2.5X0.45P	1000
MOB-2.6	M2.6X0.45P	

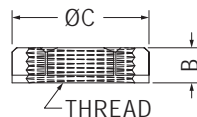
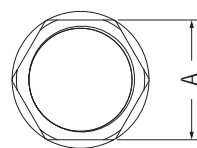


Part No.	A	B	Thread	Package
MOPG-7	17.1	5.0	PG7	1000
MOPG-9	22.0	5.1	PG9	
MOPG-11	24.0	6.1	PG11	
MOPG-13.5	27.2	6.1	PG13.5	

Part No.	A	Thread	Package
M-10	17.0	M10X1.5P	500
MO-12	17.9	M12X1.5P	1000



- Material: Nylon 66 (UL)/PP
- Flame Class: 94V-2/94V-0
- Color: Natural/Black
- Unit: mm



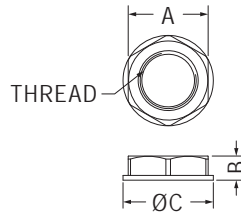
Part No.	A	B	C	Thread	Package
MO-8-1	12.0	5.0	13.0	M8X1.0P	1000
MO-13	14.0	4.1	16.0	M13X1.0P	
MO-25.4	38.2	11.7	42.2	PF1-11	100
MO-32L	36.6	8.2	41.15	M32X1.5P	500

塑膠螺帽 NUT

用途：配合一般螺絲或塑膠螺絲使用。



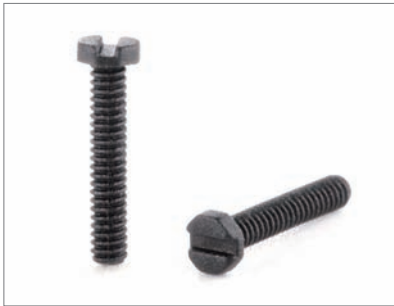
- Material: Nylon 66 (UL)
- Flame Class: 94V-2/94V-0
- Color: Natural/Black
- Unit: mm



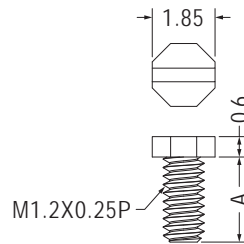
Part No.	A	B	C	Thread	Package
MO-16	22.0	6.6	24.7	M16X1.5P	1000
MO-20	27.0	6.6	29.8	M20X1.5P	500
MO-25	33.0	8.5	36.2	M25X1.5P	
MO-25-1	33.0	6.6	35.4	M25X1.5P	100
MO-32	41.0	7.6	46.4	M32X1.5P	

塑膠螺絲 SCREW

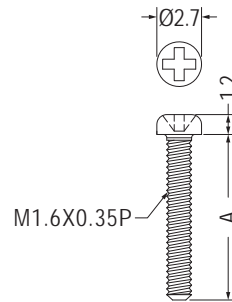
用途：用於固定需絕緣之零件，重量輕，耐腐蝕。



- Material: Nylon 66 (UL)+GF
- Flame Class: 94HB
- Color: Black
- Unit: mm



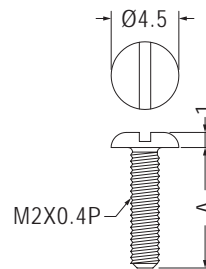
Part No.	A	Package
MI1.2-2.5NGF	2.5	1000
MI1.2-3NGF	3.0	
MI1.2-4NGF	4.0	
MI1.2-5NGF	5.0	
MI1.2-6NGF	6.0	



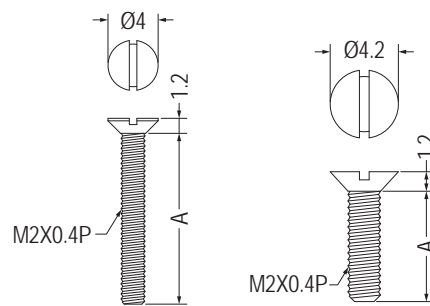
Part No.	A	Package
M1.6-3	3.0	1000
M1.6-4	4.0	
M1.6-4.5	4.5	
M1.6-5	5.0	
M1.6-6	6.0	
M1.6-7	7.0	
M1.6-8	8.0	
M1.6-9	9.0	
M1.6-10	10.0	



- Material: Nylon 66 (UL)
- Flame Class: 94V-2/94V-0
- Color: Natural/Black
- Unit: mm



Part No.	A	Package
MI2-6	6.0	1000
MI2-8	8.0	
MI2-10	10.0	
MI2-12	12.0	

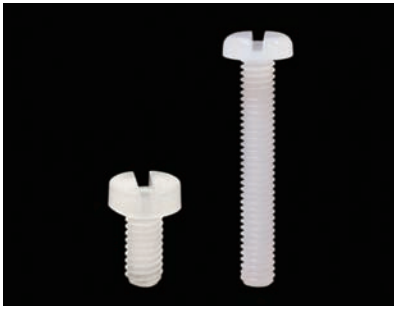


【 MI2-14.8F 】

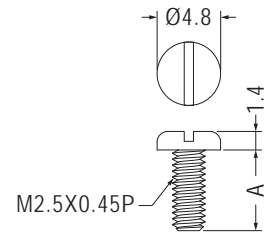
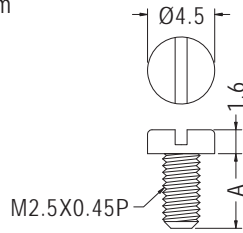
Part No.	A	Package
MI2-3.8F	3.8	1000
MI2-4.8F	4.8	
MI2-5.8F	5.8	
MI2-6.8F	6.8	
MI2-7.8F	7.8	
MI2-8.8F	8.8	
MI2-9.8F	9.8	
MI2-14.8F	14.8	

塑膠螺絲 SCREW

用途：用於固定需絕緣之零件，重量輕，耐腐蝕。

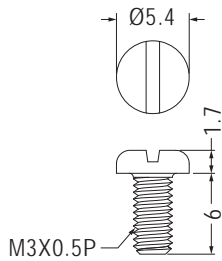


- Material: Nylon 66 (UL)
- Flame Class: 94V-2/94V-0
- Color: Natural/Black
- Unit: mm

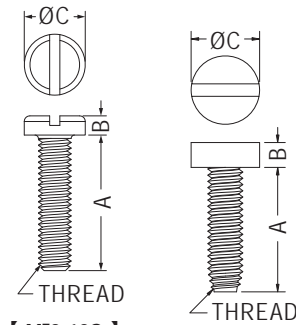


Part No.	A	Package
MI2.5-5	5.0	2000
MI2.5-12	12.0	

Part No.	A	Package
MI2.5-4	4.0	2000
★MI2.5-12S	12.0	
MI2.5-16	16.0	



Part No.	Package
MI3-6R	1000

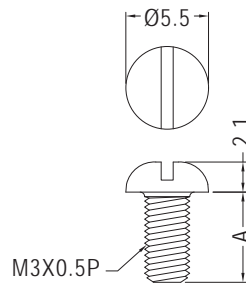


【 MI3-12S 】

Part No.	A	B	C	Thread	Package
★MI3-3	3.0	2.0	5.5	M3X0.5P	1000
MI3-5	5.0	2.0	5.5	M3X0.5P	
MI3-6	6.0	2.0	5.5	M3X0.5P	
MI3-8	8.0	2.0	5.5	M3X0.5P	
MI3-10	10.0	2.0	5.5	M3X0.5P	
MI3-12	12.0	2.0	5.5	M3X0.5P	
MI3-12S	12.0	1.7	5.4	M3X0.5P	
MI4-7	7.0	2.7	7.0	M4X0.7P	
MI4-10	10.0	2.7	7.0	M4X0.7P	



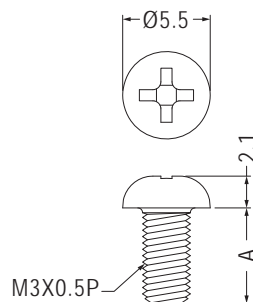
- Material: PEEK (UL)
- Flame Class: 94V-0
- Color: Natural
- Unit: mm



Part No.	A	Package
MI3-4PK	4.0	1000
MI3-5PK	5.0	
MI3-6PK	6.0	
MI3-8PK	8.0	
MI3-10PK	10.0	
MI3-12PK	12.0	
MI3-14PK	14.0	
MI3-15PK	15.0	
MI3-17PK	17.0	
MI3-18PK	18.0	
MI3-20PK	20.0	
MI3-25PK	25.0	
MI3-30PK	30.0	



- Material: PEEK (UL)
- Flame Class: 94V-0
- Color: Natural
- Unit: mm



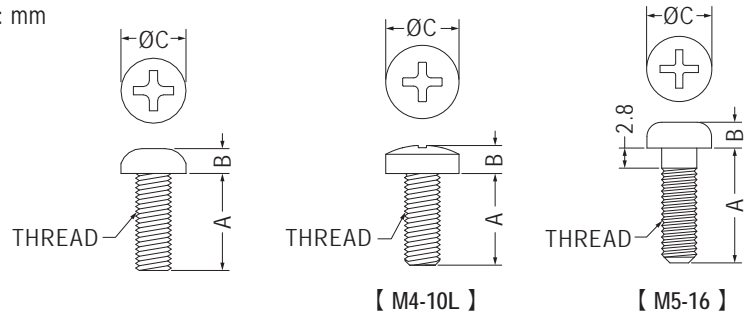
Part No.	A	Package
M3-4PK	4.0	2000
M3-5PK	5.0	
M3-6PK	6.0	
M3-8PK	8.0	1000
M3-10PK	10.0	
M3-12PK	12.0	
M3-14PK	14.0	
M3-15PK	15.0	
M3-17PK	17.0	
M3-18PK	18.0	
M3-20PK	20.0	
M3-25PK	25.0	
M3-30PK	30.0	

塑膠螺絲 SCREW

用途：用於固定需絕緣之零件，重量輕，耐腐蝕。



- Material: Nylon 66 (UL)/PC (UL)
- Flame Class: 94V-2/94V-0
- Color: Natural
- Unit: mm

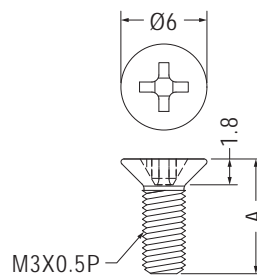


Part No.	A	B	C	Thread	Package
M2-3	3.0	1.4	3.3	M2X0.4P	2000
M2-4	4.0	1.4	3.3	M2X0.4P	
M2-5	5.0	1.4	3.3	M2X0.4P	
M2-6	6.0	1.4	3.3	M2X0.4P	
M2-6.5	6.5	1.4	3.3	M2X0.4P	
M2-8	8.0	1.4	3.3	M2X0.4P	
M2-10	10.0	1.4	3.3	M2X0.4P	
M2-12	12.0	1.4	3.3	M2X0.4P	
M2-15	15.0	1.4	3.3	M2X0.4P	
M2.5-4	4.0	1.5	4.3	M2.5X0.45P	
M2.5-5	5.0	1.5	4.3	M2.5X0.45P	
M2.5-6	6.0	1.5	4.3	M2.5X0.45P	
M2.5-8	8.0	1.5	4.3	M2.5X0.45P	
M2.5-10	10.0	1.5	4.3	M2.5X0.45P	
M2.5L-13	13.0	1.5	6.3	M2.5X0.45P	
M2.6-4	4.0	1.5	4.3	M2.6X0.45P	
M2.6-5	5.0	1.5	4.3	M2.6X0.45P	
M2.6-6	6.0	1.5	4.3	M2.6X0.45P	
M2.6-8	8.0	1.5	4.3	M2.6X0.45P	
M2.6-10	10.0	1.5	4.3	M2.6X0.45P	
M3-4	4.0	2.1	5.5	M3X0.5P	1000
M3-5	5.0	2.1	5.5	M3X0.5P	
M3-6	6.0	2.1	5.5	M3X0.5P	
M3-8	8.0	2.1	5.5	M3X0.5P	
M3-10	10.0	2.1	5.5	M3X0.5P	
M3-12	12.0	2.1	5.5	M3X0.5P	
M3-14	14.0	2.1	5.5	M3X0.5P	
M3-15	15.0	2.1	5.5	M3X0.5P	
M3-17	17.0	2.1	5.5	M3X0.5P	
M3-18	18.0	2.1	5.5	M3X0.5P	

Part No.	A	B	C	Thread	Package
M3-20	20.0	2.1	5.5	M3X0.5P	1000
M3-25	25.0	2.1	5.5	M3X0.5P	
M3-30	30.0	2.1	5.5	M3X0.5P	
★M4-5	5.0	2.5	7.0	M4X0.7P	
M4-6	6.0	2.5	7.0	M4X0.7P	
M4-8	8.0	2.5	7.0	M4X0.7P	
M4-10	10.0	2.5	7.0	M4X0.7P	
★M4-10L	10.0	3.1	8.0	M4X0.7P	
M4-12	12.0	2.5	7.0	M4X0.7P	
M4-14	14.0	2.5	7.0	M4X0.7P	
M4-16	16.0	2.5	7.0	M4X0.7P	
M4-20	20.0	2.5	7.0	M4X0.7P	
M4-25	25.0	2.5	7.0	M4X0.7P	
M4-30	30.0	2.5	7.0	M4X0.7P	
M4-35	35.0	2.5	7.0	M4X0.7P	
★M5-16	16.0	3.6	9.1	M5X0.8P	
M5-20	20.0	3.6	9.1	M5X0.8P	
R440-4S	4.75	1.8	5.8	4-40 UNC	2000
R440-6	6.4	2.4	5.2	4-40 UNC	
R440-7	7.0	2.4	5.2	4-40 UNC	
R440-8	8.0	2.4	5.2	4-40 UNC	
R440-9	9.5	2.4	5.2	4-40 UNC	1000
R440-12	12.7	2.4	5.2	4-40 UNC	
R440-15	15.5	2.4	5.2	4-40 UNC	
R632-6	6.35	2.5	6.7	6-32 UNC	2000
R632-8	8.0	2.5	6.7	6-32 UNC	
R632-9	9.5	2.5	6.7	6-32 UNC	
R632-12	12.7	2.5	6.7	6-32 UNC	1000
R632-15	15.9	2.5	6.7	6-32 UNC	
R632-19	19.1	2.5	6.7	6-32 UNC	



- Material: PEEK (UL)
- Flame Class: 94V-0
- Color: Natural
- Unit: mm



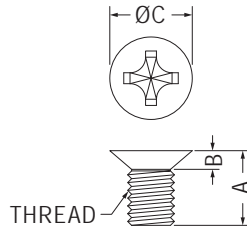
Part No.	A	Package
M3-4FPK	4.0	1000
M3-5FPK	5.0	
M3-6FPK	6.0	
M3-8FPK	8.0	
M3-10FPK	10.0	
M3-12FPK	12.0	
M3-14FPK	14.0	
M3-15FPK	15.0	
M3-17FPK	17.0	
M3-18FPK	18.0	
M3-20FPK	20.0	
M3-25FPK	25.0	
M3-30FPK	30.0	

塑膠螺絲 SCREW

用途：用於固定需絕緣之零件，重量輕，耐腐蝕。



- Material: Nylon 66 (UL)/PC (UL)
- Flame Class: 94V-2/94V-0
- Color: Natural/Black
- Unit: mm

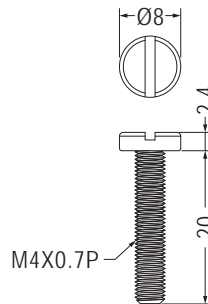


Part No.	A	B	C	Thread	Package
M2-4.5F	4.5	1.2	3.6	M2X0.4P	2000
M2-5.5F	5.5	1.2	3.6	M2X0.4P	
M2-6.5F	6.5	1.2	3.6	M2X0.4P	
M2-7.5F	7.5	1.2	3.6	M2X0.4P	
M2-8.5F	8.5	1.2	3.6	M2X0.4P	
M2.5-6F	6.0	1.5	4.6	M2.5X0.45P	
M2.5-8F	8.0	1.5	4.6	M2.5X0.45P	
M3-4.2F	4.2	1.7	6.0	M3X0.5P	1000
M3-5F	4.8	1.2	5.3	M3X0.5P	
M3-5.3F	5.0	1.6	5.3	M3X0.5P	
M3-6F	6.0	1.6	5.6	M3X0.5P	

Part No.	A	B	C	Thread	Package
M3-8F	8.0	1.6	5.6	M3X0.5P	1000
M3-10F	10.0	1.6	5.6	M3X0.5P	
M3-12F	12.0	1.6	5.6	M3X0.5P	
M3-14F	14.0	1.6	5.6	M3X0.5P	
M4-8F	8.0	2.0	7.6	M4X0.7P	
M4-10F	10.0	2.0	7.6	M4X0.7P	
M4-12F	12.0	2.0	7.6	M4X0.7P	
M4-14F	14.0	2.0	7.6	M4X0.7P	
M4-16F	16.0	2.0	7.6	M4X0.7P	
M4-18F	18.0	2.7	7.65	M4X0.7P	
M5-15F	14.8	2.5	9.1	M5X0.8P	



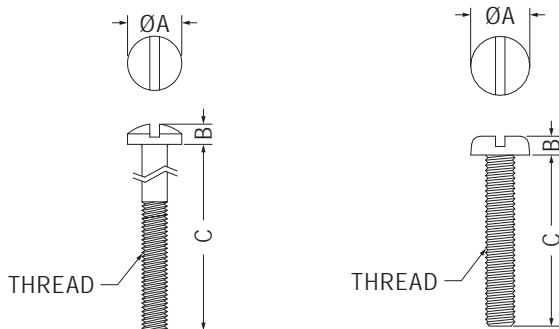
- Material: Nylon 66 (UL)
- Flame Class: 94V-2/94V-0
- Color: Natural/Black
- Unit: mm



Part No.	Package
MIL4-20	1000



- Material: Nylon 66 (UL)/PC (UL)
- Flame Class: 94V-2/94V-0
- Color: Natural
- Unit: mm



【 S632-25, S632-28 】

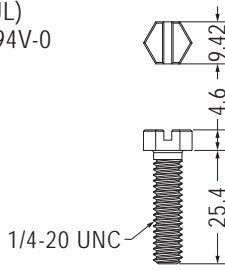
Part No.	A	B	C	Thread	Package
M3.5-10	6.9	2.2	10.0	M3.5X0.6P	1000
M3.5-15	6.9	2.2	15.0	M3.5X0.6P	
M3.5-20	6.9	2.2	20.0	M3.5X0.6P	
M3.5-25	6.9	2.2	25.0	M3.5X0.6P	
M3.5-30	6.9	2.2	30.0	M3.5X0.6P	
S440-6	5.2	2.1	6.4	4-40 UNC	2000
S440-8	5.2	2.1	8.0	4-40 UNC	
S440-9	5.2	2.1	9.5	4-40 UNC	
S440-12	5.2	2.1	12.7	4-40 UNC	1000
S440-15	5.2	2.1	15.5	4-40 UNC	
S632-6	6.7	2.5	6.35	6-32 UNC	2000
S632-8	6.7	2.5	8.0	6-32 UNC	
S632-9	6.7	2.5	9.5	6-32 UNC	
S632-12	6.7	2.5	12.7	6-32 UNC	1000
S632-15	6.7	2.5	15.9	6-32 UNC	
S632-19	6.7	2.5	19.1	6-32 UNC	
S632-25	6.7	2.5	25.4	6-32 UNC	
S632-28	6.7	2.5	28.0	6-32 UNC	

塑膠螺絲 SCREW

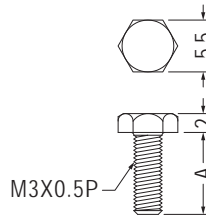
用途：用於固定需絕緣之零件，重量輕，耐腐蝕。



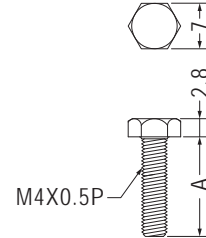
- Material: Nylon 66 (UL)
- Flame Class: 94V-2/94V-0
- Color: Natural/Black
- Unit: mm



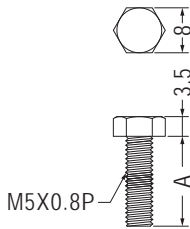
Part No.	Package
MI420-25.4	1000



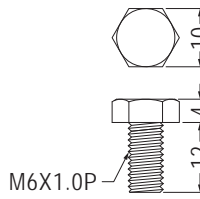
Part No.	A	Package
STM3-4	4.0	2000
STM3-6	6.0	
STM3-8	8.0	
STM3-10	10.0	
STM3-12	12.0	



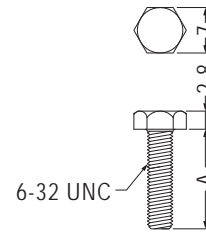
Part No.	A	Package
STM4-6	6.0	2000
STM4-8	8.0	
STM4-10	10.0	
STM4-12	12.0	



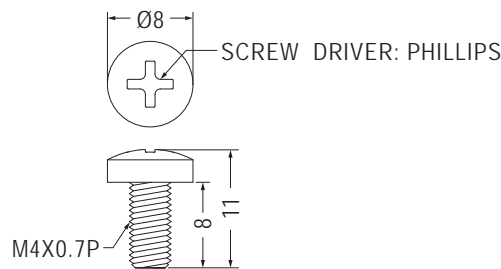
Part No.	A	Package
STM5-16	16.0	1000
STM5-25	25.0	



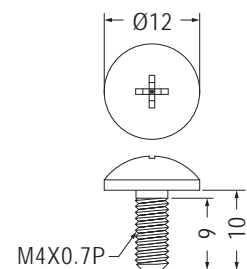
Part No.	Package
STM6-12	2000



Part No.	A	Package
STM632-6	6.35	2000
STM632-8	8.0	
STM632-9	9.5	
STM632-12	12.7	

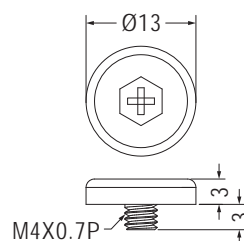


Part No.	Package
M4-8L	1000

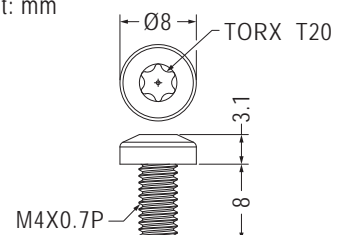


Part No.	Package
M4-9NBD	1000

- Material: PC (UL)
- Flame Class: 94V-2
- Color: Transparent
- Unit: mm



Part No.	Package
MRL4-3	1000



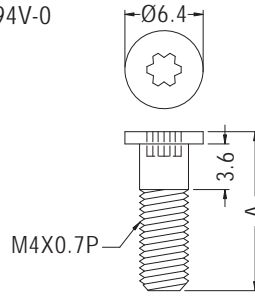
Part No.	Package
★MRT-8	1000

塑膠螺絲 SCREW

用途：用於固定需絕緣之零件，重量輕，耐腐蝕。



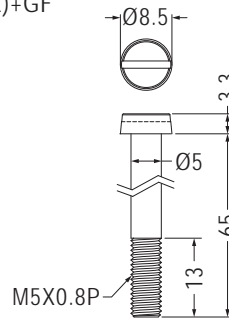
- Material: PC (UL)
- Flame Class: 94V-2/94V-0
- Color: Transparent
- Unit: mm



Part No.	A	Package
MR4-9.5	9.5	1000
MR4-12	12.0	
MR4-20	20.0	



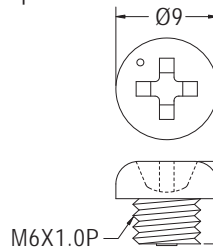
- Head Material: Nylon 66 (UL)+GF
- Head Flame Class: 94V-0
- Color: Black
- Unit: mm



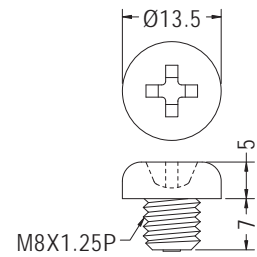
Part No.	Package
M5A-65	250



- Material: PC (UL)
- Flame Class: 94V-2/94V-0
- Color: Transparent
- Unit: mm



Part No.	Package
M6-4	1000

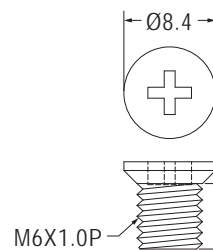


- Material: Nylon 66 (UL)
- Color: Natural/Black

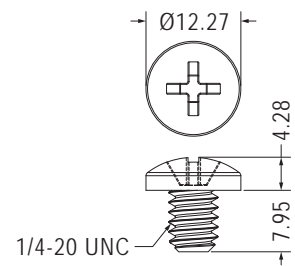
Part No.	Package
M8-7	1000



- Material: PC (UL)
- Flame Class: 94V-2/94V-0
- Color: Transparent
- Unit: mm



Part No.	Package
M6-8F	500

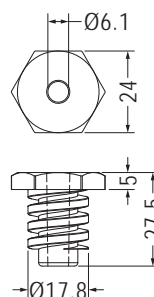


- Material: POM
- Color: Black

Part No.	Package
RU1420-8	500



- Material: PE
- Color: Black
- Unit: mm



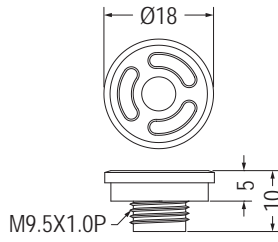
Part No.	Package
EM-528	500

塑膠螺絲 SCREW

用途：用於汽車點菸器插座之固定。



- Material: PC (UL)
- Flame Class: 94V-2/94V-0
- Color: Black
- Unit: mm

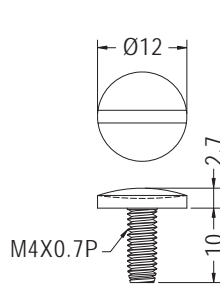


Part No.	Package
ATFF-1	1000

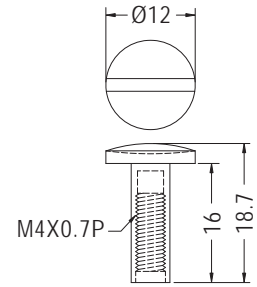


- Material: PP (UL)
- Flame Class: 94HB
- Color: Black/White
- Unit: mm

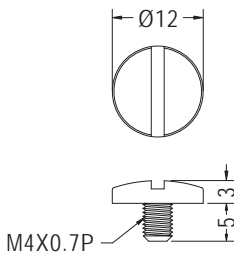
用途：用於零件、紙張及PC板之固定。



Part No.	Package
KSM-1A	1000

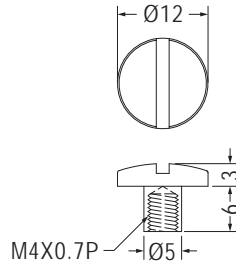


Part No.	Package
KSM-1B	1000



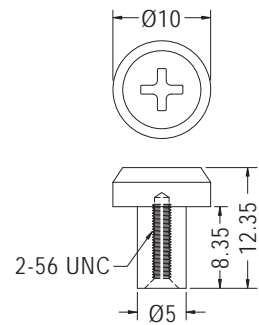
- Material: PE
- Color: Black/White

Part No.	Package
KSM4-5M	1000



- Material: PE
- Color: Black/White

Part No.	Package
KSM4-6F	1000



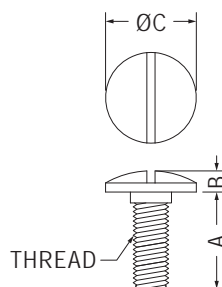
- Material: Nylon 66 (UL)
- Flame Class: 94V-2/94V-0
- Color: Natural/Black

Part No.	Package
KSC256-8.4F	2000



- Material: Nylon 66 (UL)
- Flame Class: 94V-2/94V-0
- Color: Natural/Black
- Unit: mm

用途：用於固定需絕緣之零件，重量輕，耐腐蝕。

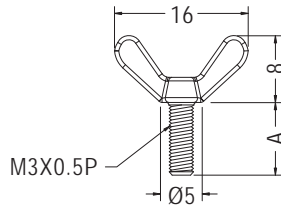


Part No.	A	B	C	Thread	Package
MIA6-16	16.0	3.5	15.0	M6X1.0P	1000
MIA8-20	20.0	5.0	18.5	M8X1.25P	500

翼型螺絲 WING BOLT

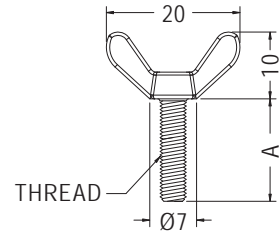


- Material: Nylon 66 (UL)
- Flame Class: 94V-2/94V-0
- Color: Natural/Black
- Unit: mm



Part No.	A	Package
SM3-6	6.0	2000
SM3-8	8.0	
SM3-10	10.0	
SM3-12	12.0	
SM3-12	12.0	

用途：用於固定需絕緣之零件，重量輕，耐腐蝕。

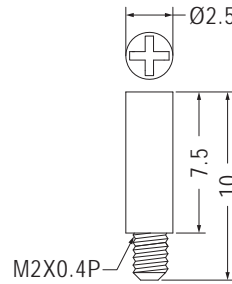


Part No.	A	Thread	Package
SM4-6	6.0	M4X0.7P	2000
SM4-8	8.0	M4X0.7P	
SM4-10	10.0	M4X0.7P	
SM4-12	12.0	M4X0.7P	
SM632-6	6.35	6-32 UNC	
SM632-8	8.0	6-32 UNC	
SM632-9	9.5	6-32 UNC	
SM632-12	12.7	6-32 UNC	

塑膠螺絲 SCREW



- Material: PC (UL)
- Flame Class: 94V-2/94V-0
- Color: Transparent
- Unit: mm



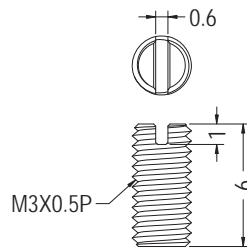
Part No.	Package
MUS2-10	2000

用途：用於固定需絕緣之零件，重量輕，耐腐蝕。

止付螺絲 SET SCREW

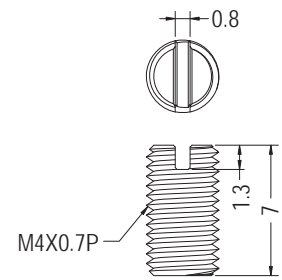


- Material: PC (UL)
- Flame Class: 94V-2/94V-0
- Color: Black
- Unit: mm



Part No.	Package
THRI3-6	2000

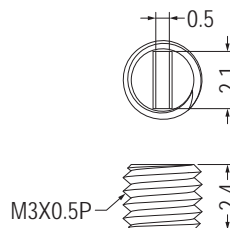
用途：做為螺絲之固定，絕緣，重量輕，耐腐蝕。



Part No.	Package
THRI4-7	2000

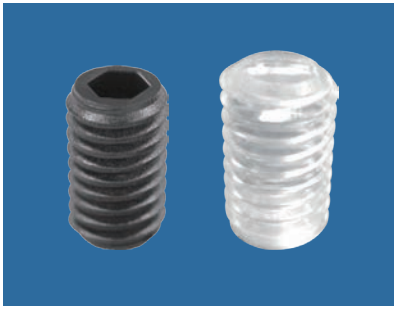


- Material: Nylon 66 (UL)
- Flame Class: 94V-2/94V-0
- Color: Natural/Black
- Unit: mm

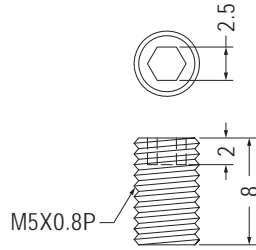


Part No.	Package
THRIA3-2.4	2000

止付螺絲 SET SCREW



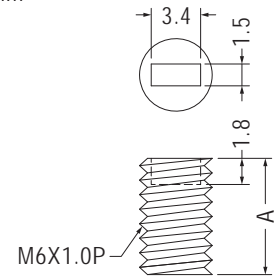
- Material: Nylon 66 (UL)
- Flame Class: 94V-2/94V-0
- Color: Natural/Black
- Unit: mm



Part No.	Package
THR5-8	2000

用途：做為螺絲之固定，絕緣，重量輕，耐腐蝕。

- Material: PC (UL)
- Flame Class: 94V-2/94V-0
- Color: Transparent
- Unit: mm

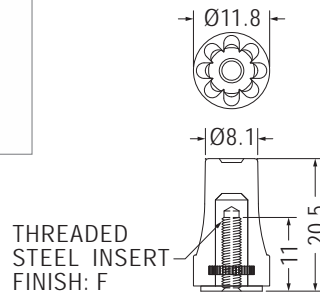


Part No.	A	Package
THRI6-6	6.0	2000
THRI6-8	8.0	
THRI6-10	10.0	

手轉螺母 HAND SPIN NUT



- Material: PC+ABS (UL)
- Flame Class: 94V-2/94V-0
- Color: Black
- Unit: mm



THREADED STEEL INSERT
FINISH: F

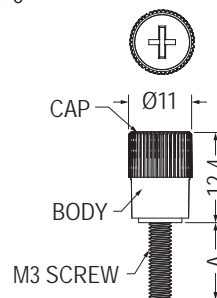
用途：用於外殼及零組件之固定，可手轉，不需工具，方便不脫落。

Part No.	F	Thread	Package
GPM3-20	Zinc Plated	M3X0.5P	1000
GPM4-20	Nickel Plated	M4X0.7P	
GPM632-20	Zinc Plated/ Nickel Plated	6-32 UNC	

手轉螺絲 THUMB SCREW

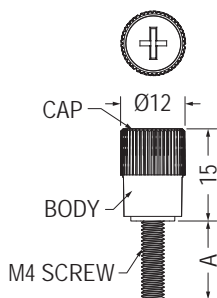


- Material: Nylon 66 (UL)
- Flame Class: 94V-2/94V-0
- Color: Black
- Unit: mm

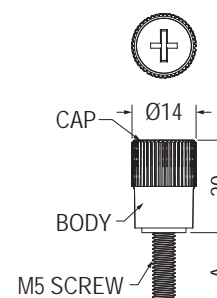


Part No.	A	Package
HASW3-8	5.0	1000
HASW3-9	6.0	
HASW3-13	10.0	
HASW3-18	15.0	
HASW3-23	20.0	
HASW3-28	25.0	
HASW3-33	30.0	

用途：用於外殼及零組件之固定，可手轉，不需工具，方便不脫落。



Part No.	A	Package
HASW4-8	5.0	1000
HASW4-13	10.0	
HASW4-18	15.0	
HASW4-23	20.0	
HASW4-28	25.0	
HASW4-33	30.0	



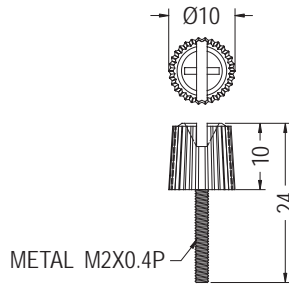
Part No.	A	Package
HASW5-10	7.0	1000
HASW5-15	12.0	
HASW5-20	17.0	
HASW5-25	22.0	
HASW5-30	27.0	
HASW5-35	32.0	
HASW5-40	37.0	
HASW5-45	42.0	
HASW5-50	47.0	

手轉螺絲 THUMB SCREW

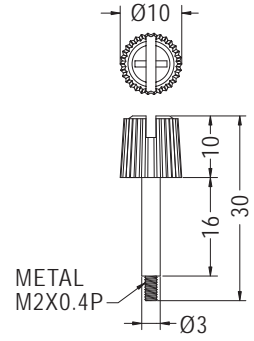
用途：螺絲式，固定於機殼。



- Head Material: PC+ABS (UL)
- Head Flame Class: 94V-2/94V-0
- Color: Black
- Unit: mm



Part No.	Package
GPE2-24	1000

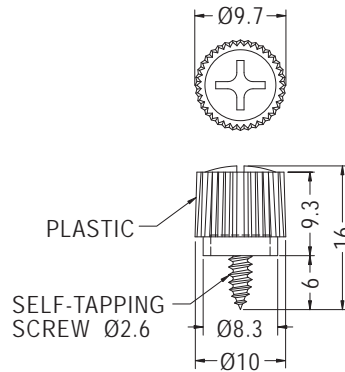


Part No.	Package
GPE2-30	1000



- Plastic Material: PP (UL)
- Flame Class: 94HB
- Color: Black
- Unit: mm

用途：做為螺絲之固定，絕緣，重量輕，耐腐蝕。

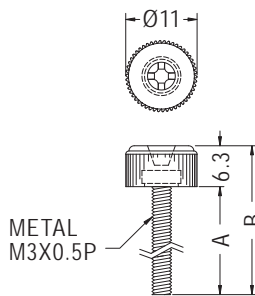


Part No.	Package
GPE2.6-6	1000



- Head Material: PC+ABS (UL)
- Head Flame Class: 94V-2/94V-0
- Color: Black
- Unit: mm

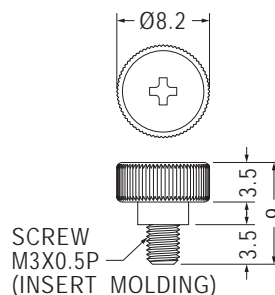
用途：螺絲式，固定於機殼。



Part No.	A	B	Package
GPE3-5.5	5.5	11.8	1000
GPE3-8	8.0	14.3	
GPE3-15	15.0	21.3	
GPE3-23	23.0	29.3	



- Material: PC+ABS (UL)
- Flame Class: 94V-2/94V-0
- Color: Black
- Unit: mm



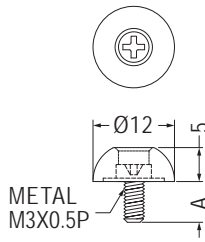
Part No.	Package
GPEE3-3.5	1000

螺絲 SCREW

用途：螺絲式，固定於機殼。



- Head Material: PC+ABS (UL)
- Head Flame Class: 94V-2/94V-0
- Color: Black
- Unit: mm



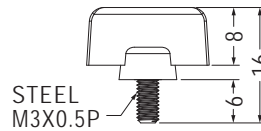
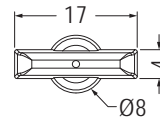
Part No.	A	Package
GPEA3-6BN	6.0	500
GPEA3-8BN	8.0	

手轉螺絲 THUMB SCREW

用途：用於外殼及零組件之固定，可手轉，不需工具，方便不脫落。



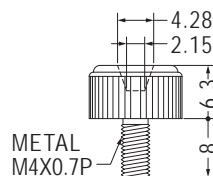
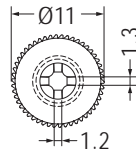
- Head Material: PC (UL)
- Head Flame Class: 94V-2/94V-0
- Color: Black
- Unit: mm



Part No.	Package
GPED3-6	500



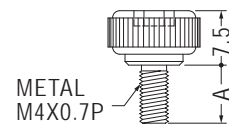
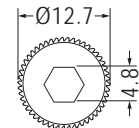
- Head Material: PC+ABS (UL)
- Head Flame Class: 94V-2/94V-0
- Color: Natural/Black
- Unit: mm



Part No.	Package
GPE4-8	500

用途：螺絲式，固定於機殼。

- Head Material: ABS (UL)
- Head Flame Class: 94HB
- Color: Natural/Black
- Unit: mm

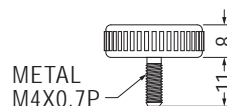
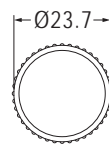


Part No.	A	Package
GPE4-8L	8.0	500
GPE4-12L	12.0	

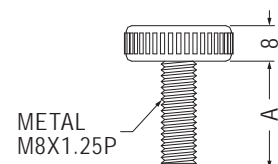
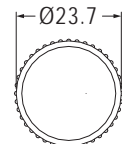


- Head Material: PP (UL)
- Head Flame Class: 94HB
- Color: Black
- Unit: mm

用途：用於外殼及零組件之固定，可手轉，不需工具，方便不脫落。



Part No.	Package
GPE4-12-1	200



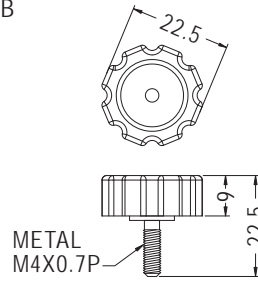
Part No.	A	Package
GPE8-21	13.0	100
GPE8-32	24.7	

手轉螺絲 THUMB SCREW

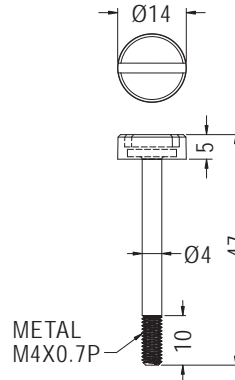
用途：螺絲式，固定於機殼。



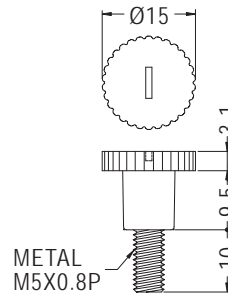
- Head Material: ABS (UL)
- Head Flame Class: 94HB
- Color: Black
- Unit: mm



Part No.	Package
GPE4-13.5	250



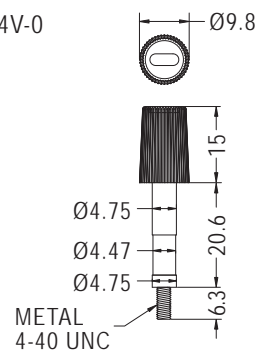
Part No.	Package
GPE4-42	250



Part No.	Package
GPE5-20	500



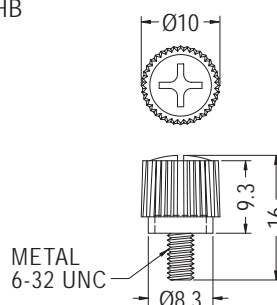
- Head Material: PC (UL)
- Head Flame Class: 94V-2/94V-0
- Color: Black
- Unit: mm



Part No.	Package
GPE44-1	500



- Head Material: PP (UL)
- Head Flame Class: 94HB
- Color: Black
- Unit: mm



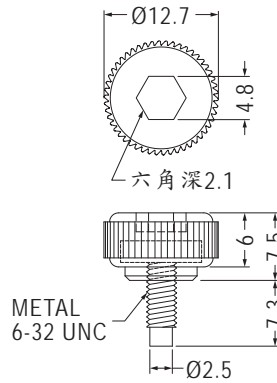
Part No.	Package
GPE632-6	500

手轉螺絲 THUMB SCREW

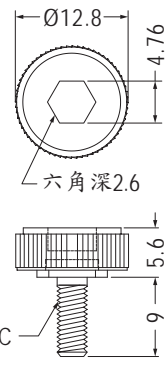
用途：螺絲式，固定於機殼。



- Head Material: ABS (UL)
- Head Flame Class: 94HB
- Color: Natural/Black
- Unit: mm



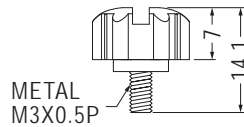
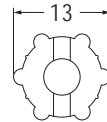
Part No.	Package
GPE632-5	500



Part No.	Package
GPE632-9	500

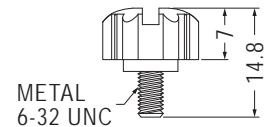
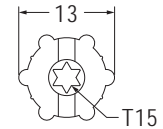


- Head Material: PC+ABS (UL)
- Head Flame Class: 94V-2/94V-0
- Color: Black
- Unit: mm



Part No.	Package
GPR3-5.5	1000

- Head Material: ABS (UL)
- Head Flame Class: 94HB
- Color: Black



Part No.	Package
GPR632-6	500

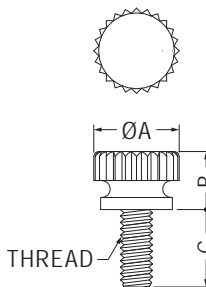


旋鈕螺絲 SCREW

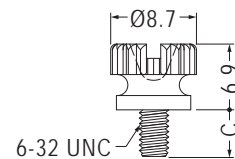
用途：用於固定需絕緣之零件，重量輕，耐腐蝕，可用手旋轉，一般用於電腦外殼之固定。



- Material: Nylon 66 (UL)
- Flame Class: 94V-2/94V-0
- Color: Natural/Black
- Unit: mm



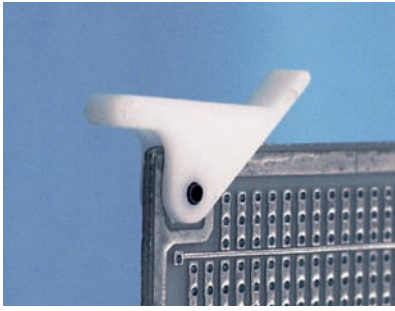
Part No.	A	B	C	Thread	Package
SUS632	9.0	6.9	9.8	6-32 UNC	1000
SUS832	10.6	7.2	9.6	8-32 UNC	



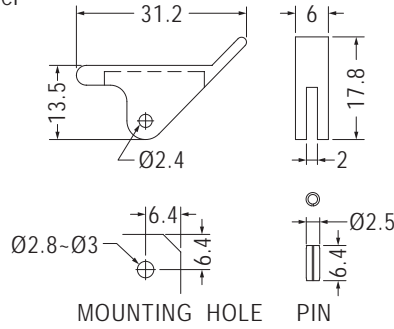
Part No.	C	Package
RSUS632	5.0	1000
RSUS632-6	6.0	

PC板拉柄 CARD PULLER

用途：與PC板導槽配合，可快速將PC板拉出與壓入。



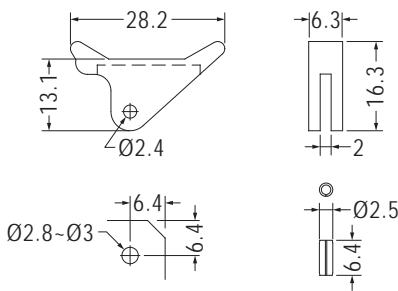
- Material: POM (UL)
- Flame Class: 94HB
- Pin Material: Steel
- Color: Natural
- Unit: mm



Part No.	Package
CP-15	1000

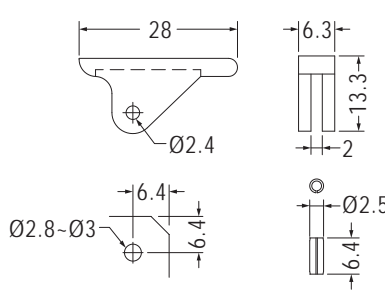
- Material: Nylon 66 (UL) /POM (UL)
- Flame Class: 94HB/94V-2/94V-0
- Pin Material: Steel
- Color: Natural/Black

- Material: Nylon 66 (UL)
- Flame Class: 94V-2/94V-0
- Pin Material: Steel
- Color: Natural/Black



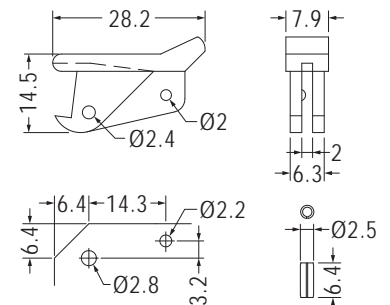
MOUNTING HOLE PIN

Part No.	Package
CP-25	1000



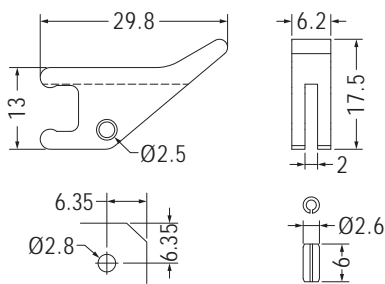
MOUNTING HOLE PIN

Part No.	Package
CP-20	1000



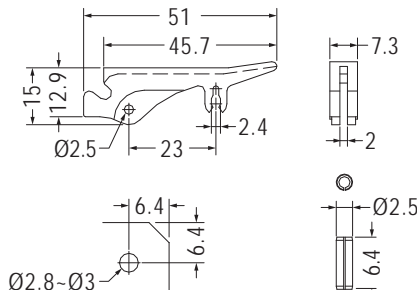
MOUNTING HOLE PIN

Part No.	Package
CP-30	1000



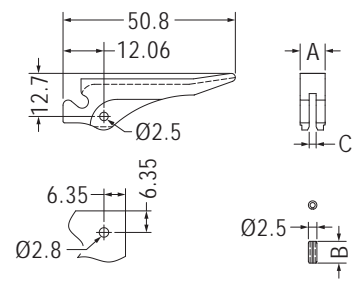
MOUNTING HOLE PIN

Part No.	Package
CP-90	1000



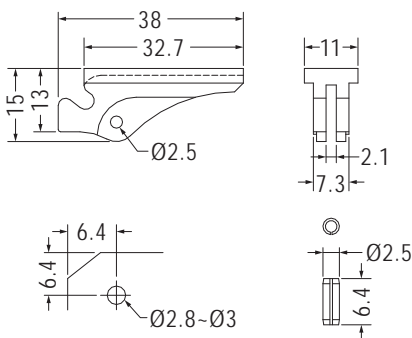
MOUNTING HOLE PIN

Part No.	Package
CP-37	500



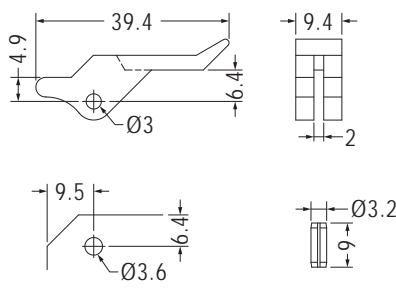
MOUNTING HOLE PIN

Part No.	A	B	C	Package
CP-38	7.3	6.4	2.0	500
CP-38L	8.8	8.0	3.5	



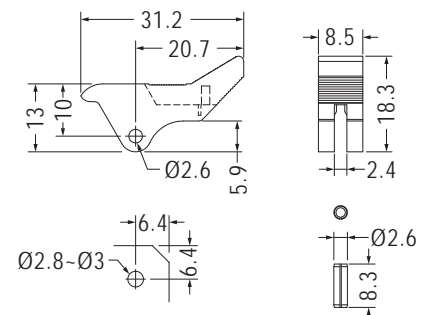
MOUNTING HOLE PIN

Part No.	Package
CP-47	500



MOUNTING HOLE PIN

Part No.	Package
CP-50	500



MOUNTING HOLE PIN

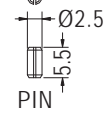
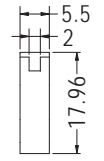
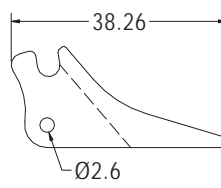
Part No.	Package
CP-70	1000

PC板拉柄 CARD PULLER

用途：與PC板導槽配合，可快速將PC板拉出與壓入。



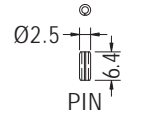
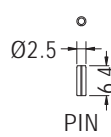
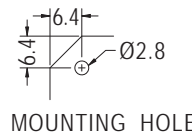
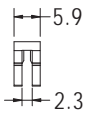
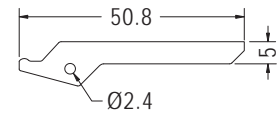
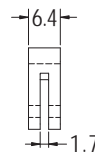
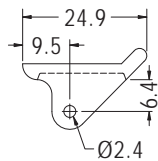
- Material: POM (UL)
- Flame Class: 94HB
- Pin Material: Steel
- Color: Black
- Unit: mm



Part No.	Package
CP-72	500

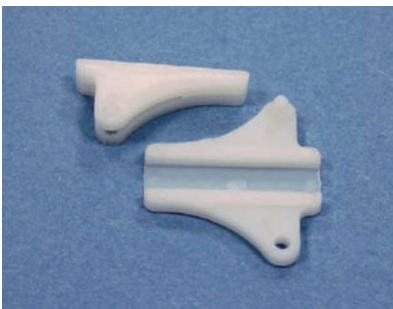


- Material: Nylon 66 (UL)
- Flame Class: 94V-2/94V-0
- Pin Material: Steel
- Color: Natural/Black
- Unit: mm

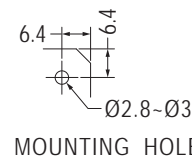
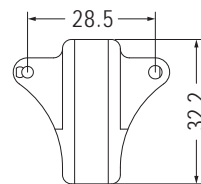
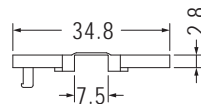


Part No.	Package
CP-82	1000

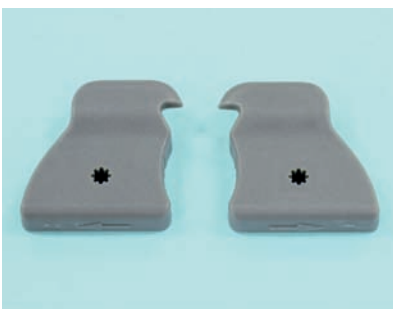
Part No.	Package
CP-84	1000



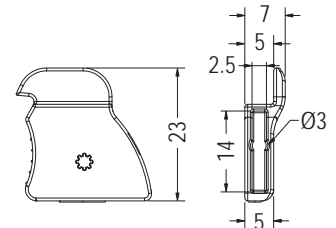
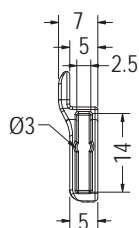
- Material: Nylon 66 (UL)
- Flame Class: 94V-2/94V-0
- Color: Natural/Black
- Unit: mm



Part No.	Package
CP-35	500



- Material: PC+ABS (UL)
- Flame Class: 94V-0
- Color: Gray/Orange
- Unit: mm

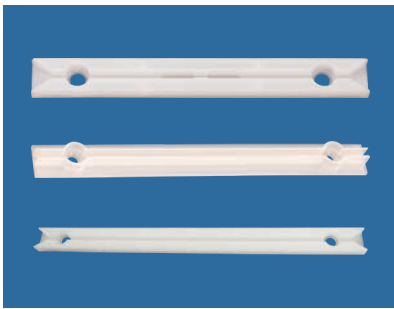


Part No.	Package
CP-76	1000

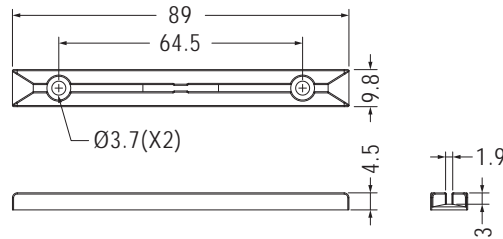
Part No.	Package
CP-77	1000

PC板導槽 CARD GUIDE

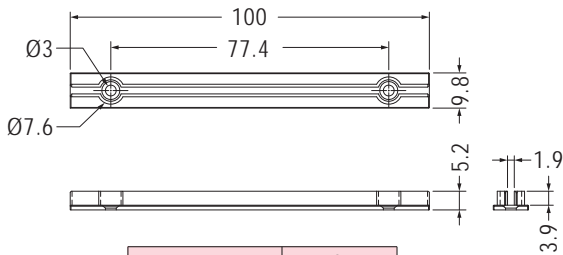
用途：用螺絲鎖於機板，固定PC板於機殼上，安裝方便。



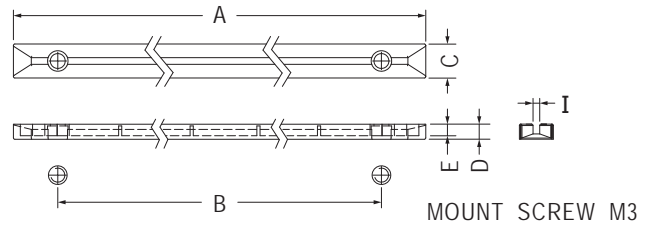
- Material: Nylon 66 (UL)
- Flame Class: 94V-2/94V-0
- Color: Natural/Black
- Unit: mm



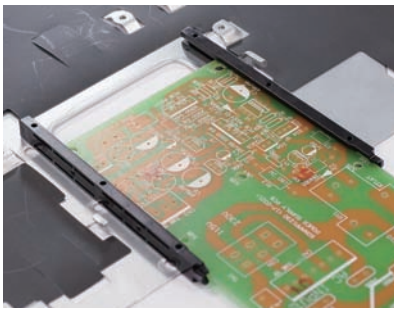
Part No.	Package
CGBC-89	250



Part No.	Package
CGBB-100	250

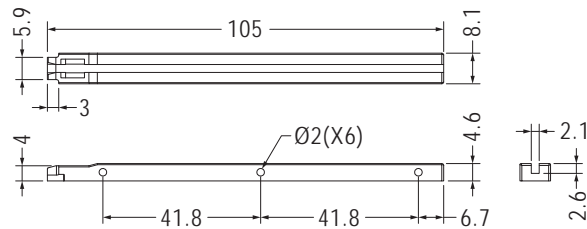


Part No.	A	B	C	D	E	I	Package
CGB-100L	100.0	77.0	10.0	7.2	5.4	2.2	250
CGB-120	119.0	94.5	9.8	4.5	3.0	1.9	
CGB-140	139.8	114.5	9.7	4.3	2.8	1.9	
CGB-160	158.7	135.0	9.7	4.3	2.8	1.9	



- Material: PC+ABS (UL)
- Flame Class: 94V-0
- Color: Black
- Unit: mm

用途：固定OCP3.0板於機殼或PC板上，安裝方便。

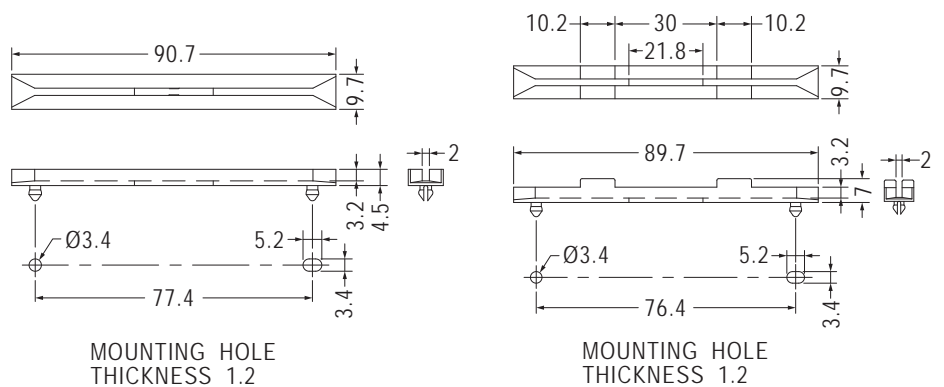


Part No.	Package
CGQ-105	250

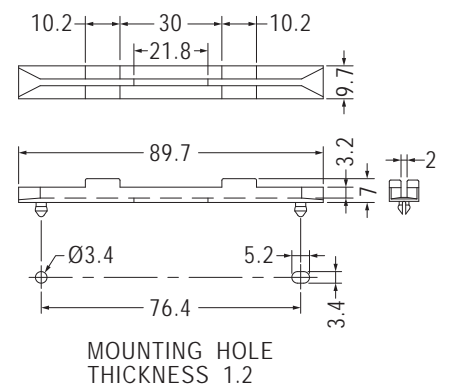


- Material: Nylon 66 (UL)
- Flame Class: 94V-2/94V-0
- Color: Natural/Black
- Unit: mm

用途：固定PC板於機殼上，安裝方便，免螺絲。



Part No.	Package
CG-9A	250



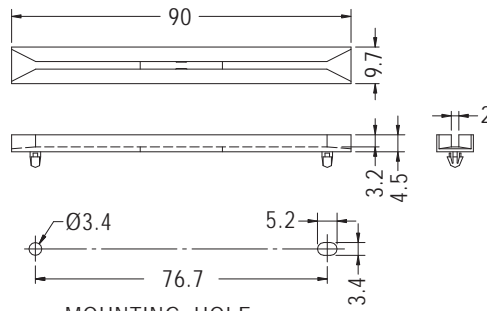
Part No.	Package
CG-9AL	250

PC板導槽 CARD GUIDE

用途：固定PC板於機殼上，安裝方便，免螺絲。

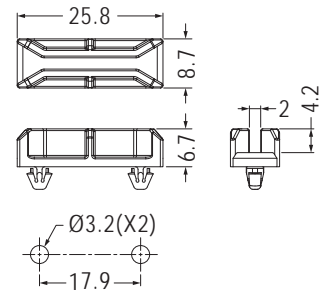


- Material: Nylon 66 (UL)
- Flame Class: 94V-2/94V-0
- Color: Natural/Black
- Unit: mm



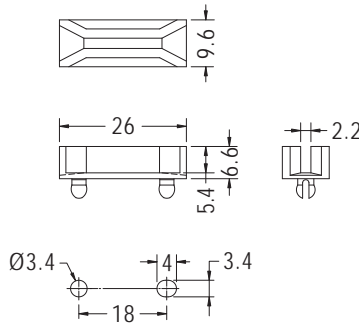
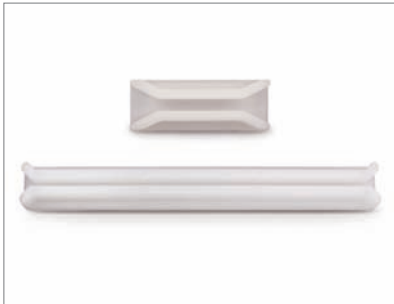
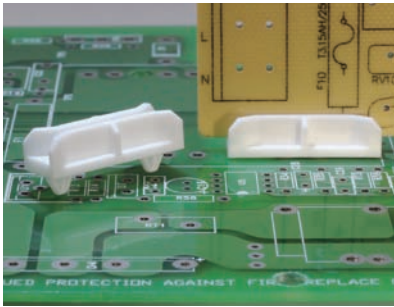
MOUNTING HOLE
CHASSIS THICKNESS 1.2

Part No.	Package
CG-9B	250



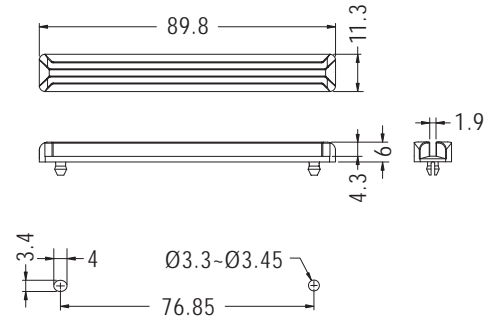
MOUNTING HOLE
THICKNESS 0.8

Part No.	Package
CG-25	500



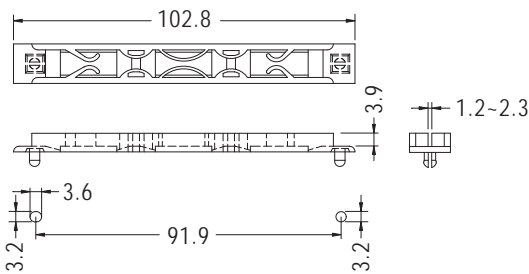
MOUNTING HOLE
CHASSIS THICKNESS 1.2

Part No.	Package
CG-26	500



MOUNTING HOLE
CHASSIS THICKNESS 1.2-2.3

Part No.	Package
CG-9D	500

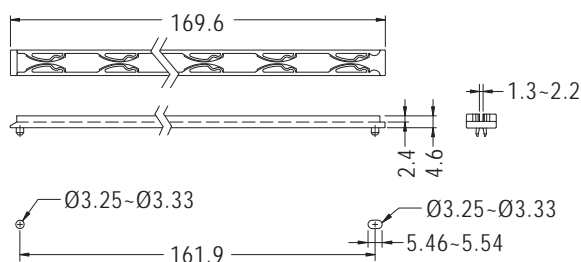


MOUNTING HOLE
CHASSIS THICKNESS 1.6-2.2

Part No.	Package
CG-10A	250



- Material: PC (UL)
- Flame Class: 94V-2/94V-0
- Color: Black
- Unit: mm

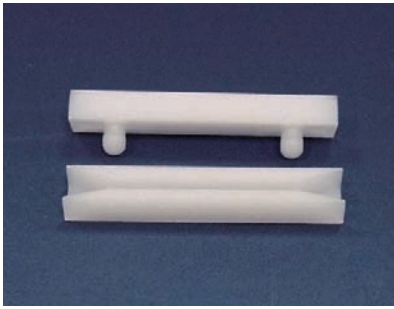


MOUNTING HOLE
CHASSIS THICKNESS 1.5-1.8

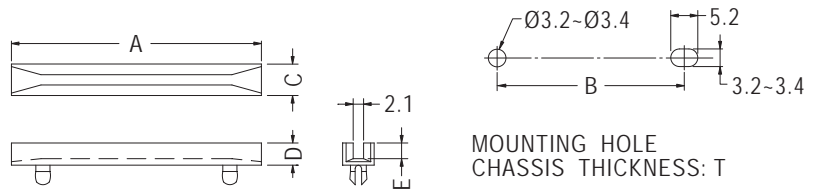
Part No.	Package
CGE-169	500

PC板導槽 CARD GUIDE

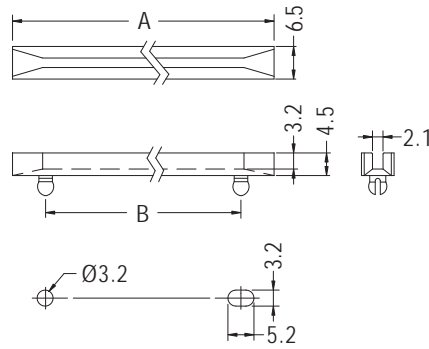
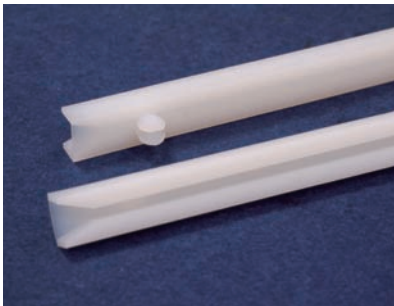
用途：固定PC板於機殼上，安裝方便，免螺絲。



- Material: Nylon 66 (UL)
- Flame Class: 94V-2/94V-0
- Color: Natural/Black
- Unit: mm

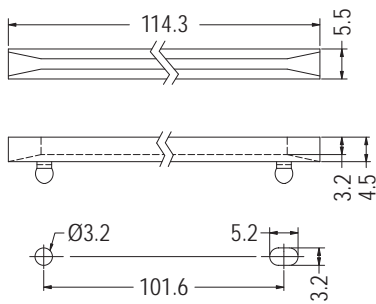


Part No.	A	B	C	D	E	T	Package
CG-38	38.0	25.4	6.4	4.5	3.2	0.8~1.2	500
CG-38L	38.0	25.4	9.6	4.6	3.0	1.0~1.6	
CG-50	50.8	38.0	6.4	4.5	3.2	0.8~1.2	
CG-50S	50.8	38.0	6.4	2.5	1.2	0.8~1.2	
CG-90S	88.9	76.2	6.4	2.8	1.5	0.8~1.2	



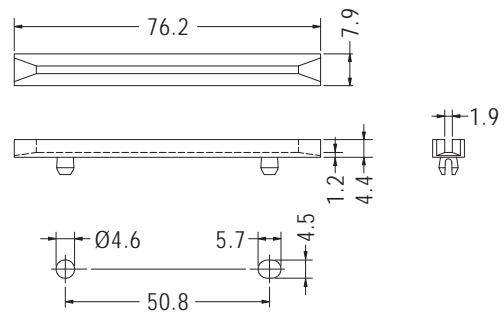
MOUNTING HOLE
CHASSIS THICKNESS 0.8-1.2

Part No.	A	B	Package
CG-250	63.5	50.8	500
CG-300	76.2	63.5	
CG-350	88.9	76.2	250
CG-400	101.6	88.9	
CG-450	114.3	101.6	200
CG-500	127.0	114.3	
CG-550	139.7	127.0	
CG-600	152.4	139.7	



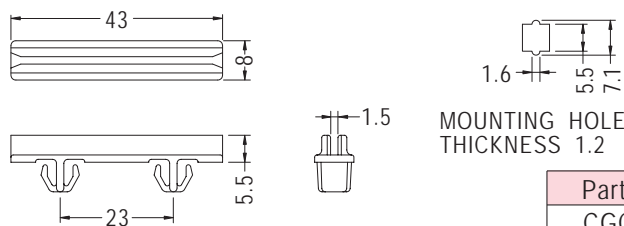
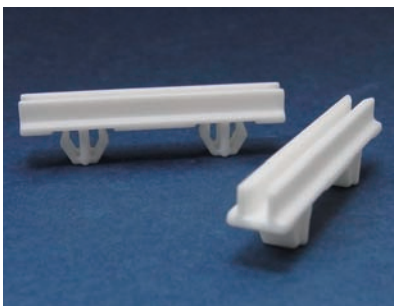
MOUNTING HOLE
CHASSIS THICKNESS 0.8-1.2

Part No.	Package
CG-450S	500



MOUNTING HOLE
CHASSIS THICKNESS 1.2-2.3

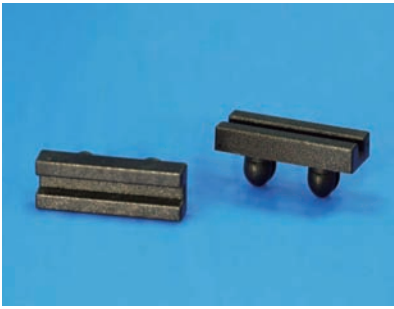
Part No.	Package
CG-300L	500



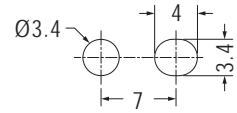
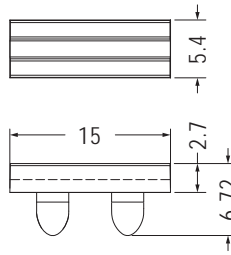
Part No.	Package
CGC-43	500

PC板導槽 CARD GUIDE

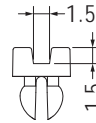
用途：固定PC板於機殼上，安裝方便，免螺絲。



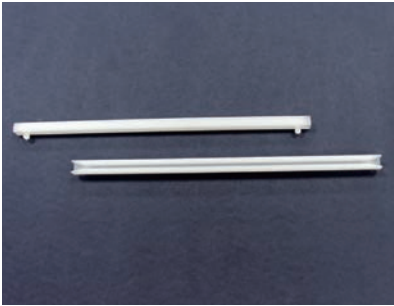
- Material: PC (UL)
- Flame Class: 94V-2
- Color: Black
- Unit: mm



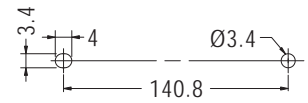
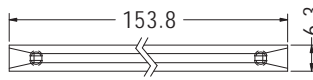
MOUNTING HOLE THICKNESS 1.0



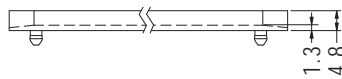
Part No.	Package
CG-15	1000



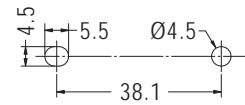
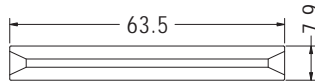
- Material: Nylon 66 (UL)
- Flame Class: 94V-2/94V-0
- Color: Natural/Black
- Unit: mm



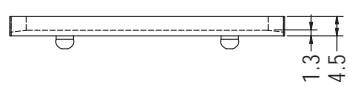
MOUNTING HOLE CHASSIS THICKNESS 1.2



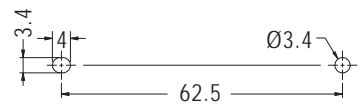
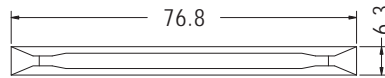
Part No.	Package
CG-153	100



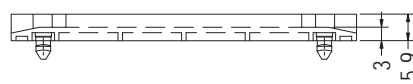
MOUNTING HOLE CHASSIS THICKNESS 0.8



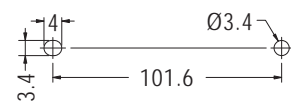
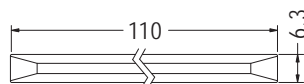
Part No.	Package
CG-63	500



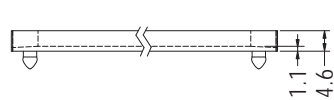
MOUNTING HOLE CHASSIS THICKNESS 1.0



Part No.	Package
CG-77	500



MOUNTING HOLE THICKNESS 0.8-1.2



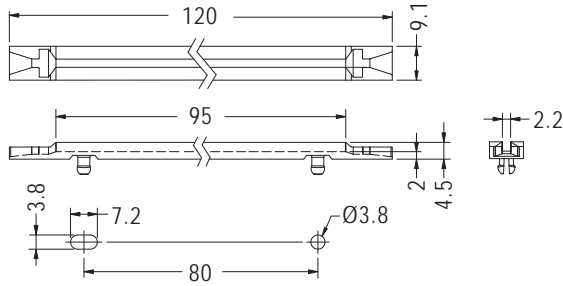
Part No.	Package
CG-110	100

PC板導槽 CARD GUIDE

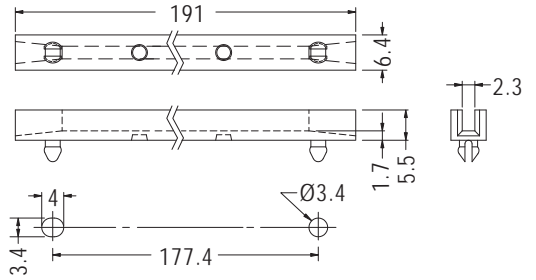
用途：固定PC板於機殼上，安裝方便，免螺絲。



- Material: Nylon 66 (UL)
- Flame Class: 94V-2/94V-0
- Color: Natural/Black
- Unit: mm

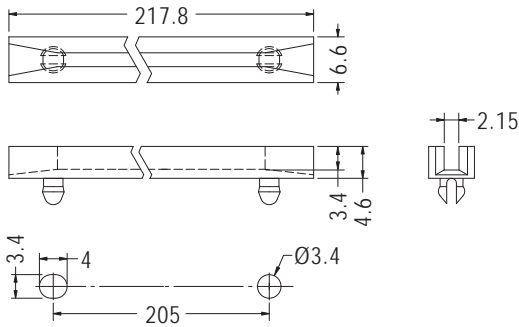


MOUNTING HOLE CHASSIS THICKNESS 1.6	Part No. CG-120	Package 100
--	--------------------	----------------

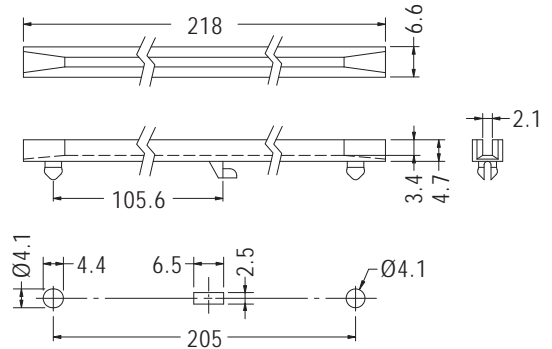


MOUNTING HOLE CHASSIS THICKNESS 1.2	Part No. CG-191	Package 100
--	--------------------	----------------

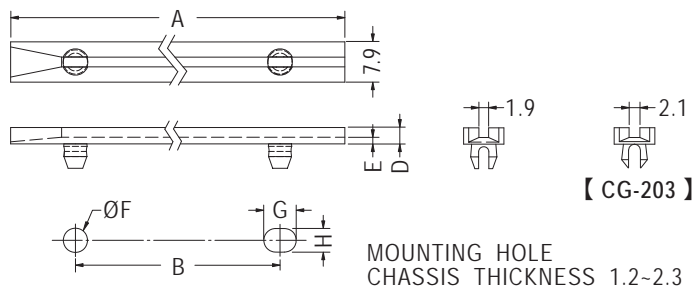
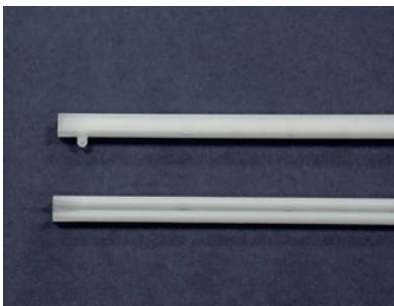
- Material: PC
- Color: Black



MOUNTING HOLE CHASSIS THICKNESS 1.2	Part No. CG-218	Package 100
--	--------------------	----------------



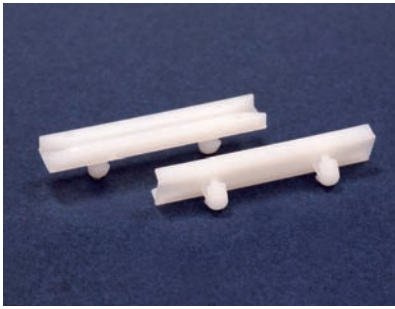
MOUNTING HOLE CHASSIS THICKNESS 1.2	Part No. CGF-218	Package 100
--	---------------------	----------------



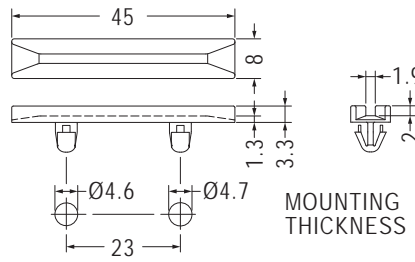
Part No.	A	B	D	E	F	G	H	Package
CG-203	203.2	177.8	3.2	1.9	4.6	5.4	4.6	100
CG-600A	152.4	127.0	3.2	1.3	4.75	6.4	4.62	200
CG-650	164.1	139.7	4.4	1.2	4.57	5.71	4.47	
CG-700	177.8	152.4	3.2	1.3	4.75	6.35	4.62	100
CG-700A	177.8	152.4	3.2	1.3	4.5	5.6	4.4	
CG-750	190.5	165.1	3.2	1.3	4.57	5.71	4.47	

PC板導槽 CARD GUIDE

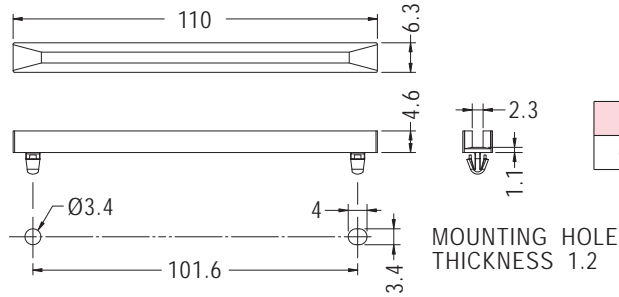
用途：固定PC板於機殼上，安裝方便，免螺絲。



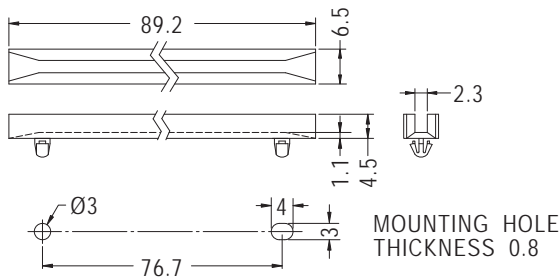
- Material: Nylon 66 (UL)
- Flame Class: 94V-2/94V-0
- Color: Natural/Black
- Unit: mm



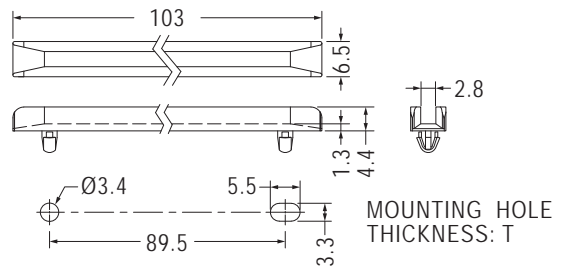
Part No.	Package
CG-45	1000



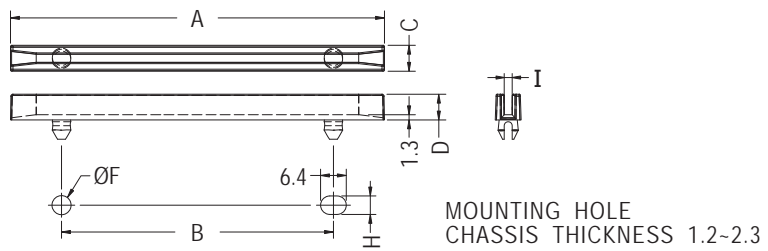
Part No.	Package
CGLJ-110	500



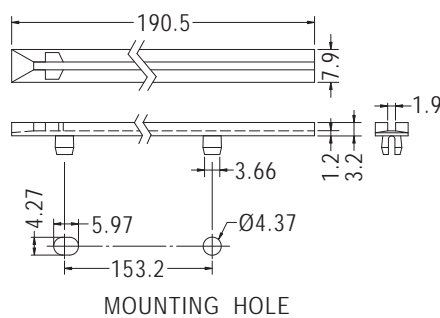
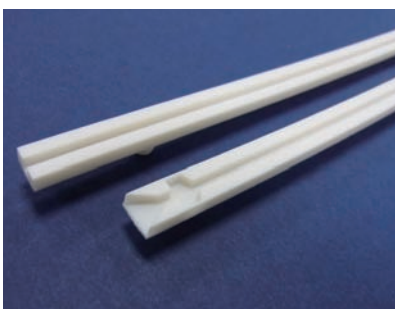
Part No.	Package
CGDLA-350	250



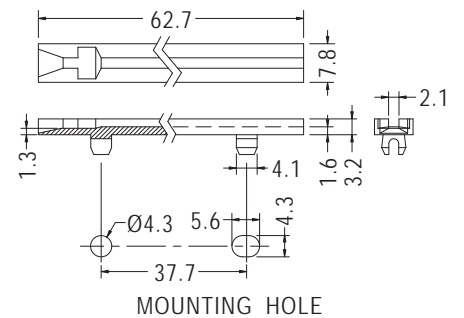
Part No.	T	Package
CGDLA-102	1.0	500
CGDLA-102L	1.5	



Part No.	A	B	C	D	F	H	I	Package
BCG-250	63.5	38.1	6.35	6.35	4.8	4.8	2.2	500
BCG-450	114.3	88.9	6.4	6.4	4.75	4.6	2.0	



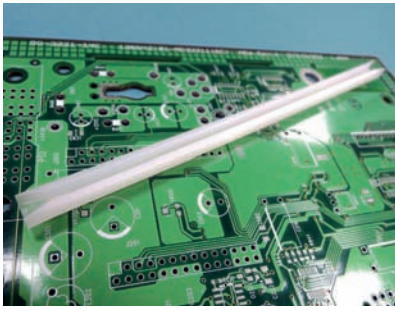
Part No.	Package
FR-190	500



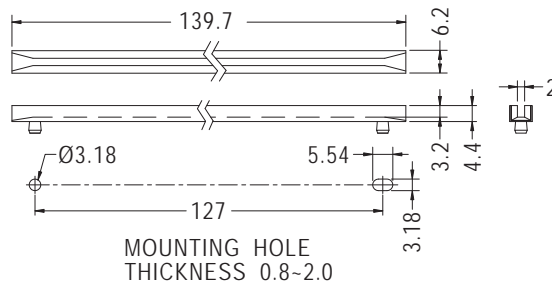
Part No.	Package
FR-250	500

PC板導槽 CARD GUIDE

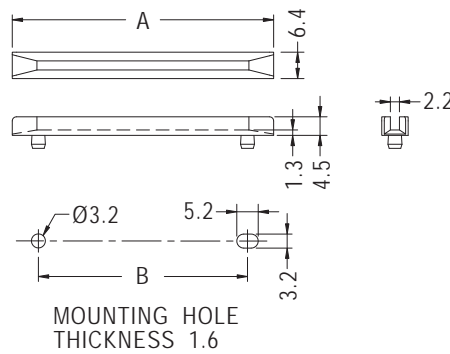
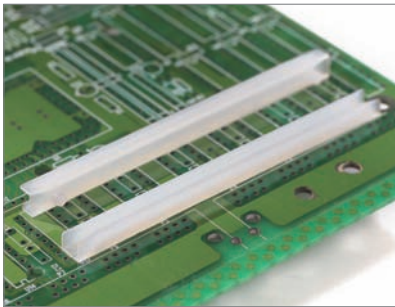
用途：固定PC板於機殼上，安裝方便，免螺絲。



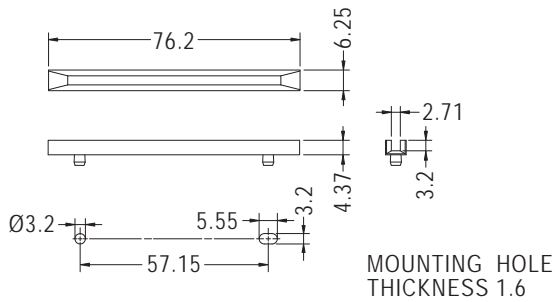
- Material: Nylon 66 (UL)
- Flame Class: 94V-2/94V-0
- Color: Natural/Black
- Unit: mm



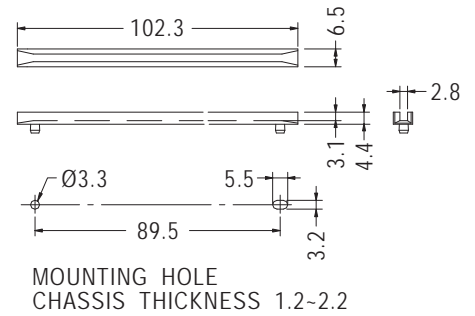
Part No.	Package
CG-140	250



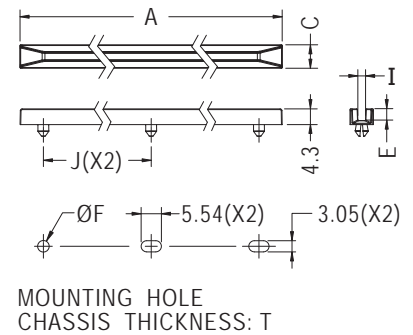
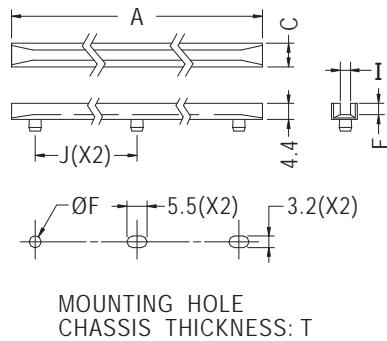
Part No.	A	B	Package
CGA-63	63.5	50.8	500
CGA-89	88.9	76.2	



Part No.	Package
CGA-76	500



Part No.	Package
CGA-102	250



【CGA-178S】

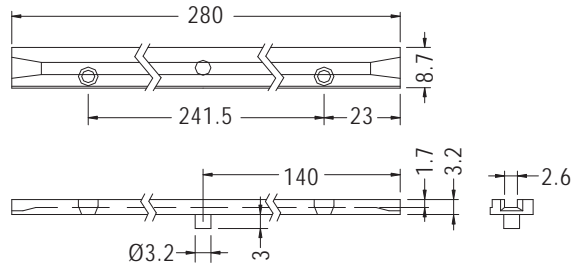
Part No.	A	C	E	F	I	J	T	Package
CGA-178	178.5	6.5	3.1	3.3	2.8	83.0	1.2-2.2	200
CGA-178S	177.8	6.4	3.2	3.18	2.0	82.55	1.2-2.2	
CGA-203	203.2	6.2	3.2	3.2	2.0	95.2	1.2-2.0	100
CGA-217	217.0	6.5	3.1	3.3	2.8	102.0	1.2-2.2	200

PC板導槽 CARD GUIDE

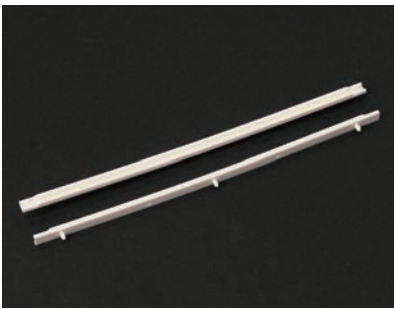
用途：用螺絲鎖於機板，固定PC板於機殼上，安裝方便。



- Material: Nylon 66 (UL)
- Flame Class: 94V-2/94V-0
- Color: Natural/Black
- Unit: mm

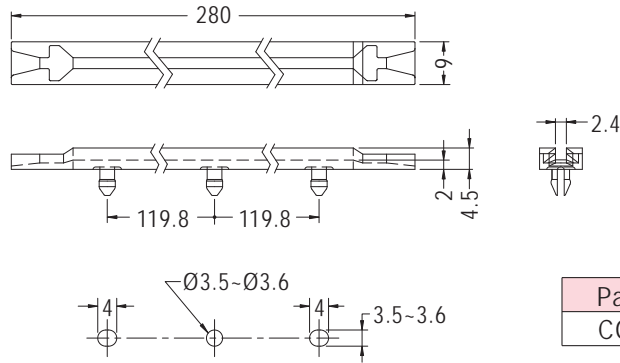


Part No.	Package
CGS-280	100



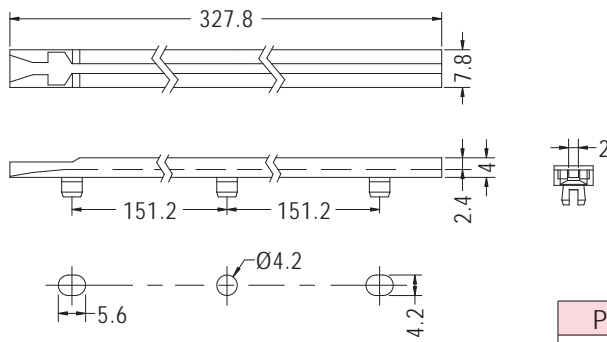
- Material: Nylon 66 (UL)
- Flame Class: 94V-2/94V-0
- Color: Natural/Black
- Unit: mm

用途：固定PC板於機殼上，安裝方便，免螺絲。



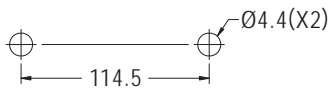
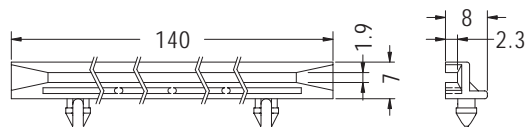
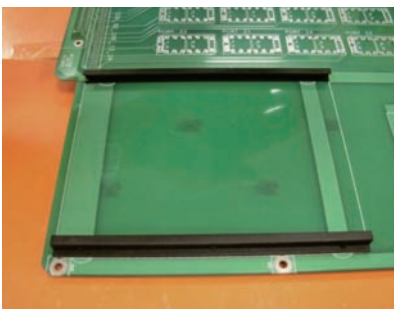
HOLE IN CHASSIS THICKNESS 2.0

Part No.	Package
CG-280	100



MOUNTING HOLE

Part No.	Package
FR-1300	100

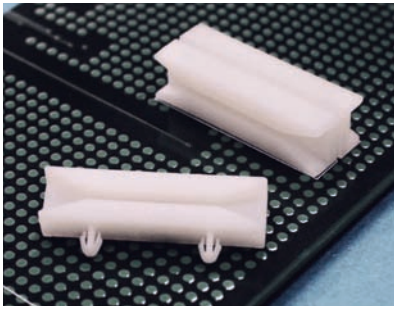


MOUNTING HOLE P.C.B THICKNESS 1.6

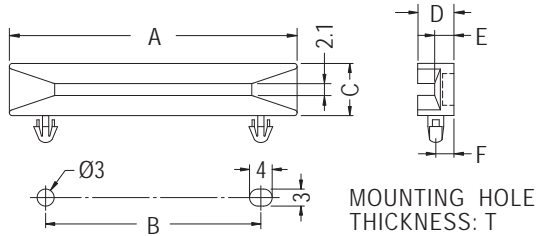
Part No.	Package
CGA-140	100

PC板導槽 CARD GUIDE

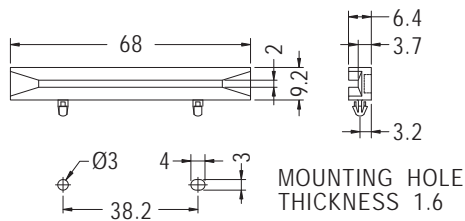
用途：固定PC板於機殼上，安裝方便，免螺絲。



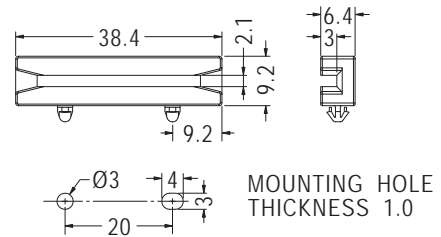
- Material: Nylon 66 (UL)
- Flame Class: 94V-2/94V-0
- Color: Natural/Black
- Unit: mm



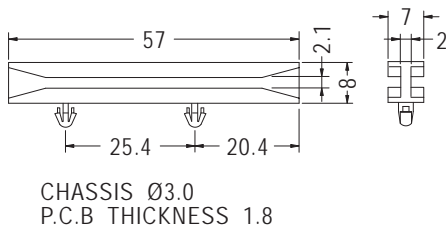
Part No.	A	B	C	D	E	F	T	Package
CGLA-4	38.4	20.0	9.2	6.4	3.4	3.2	1.6~1.7	500
CGLA-4(1)	38.4	20.0	9.2	6.4	3.4	3.2	1.0	
CGLA-4(2)	38.4	20.0	9.2	6.4	3.4	3.2	2.0	
CGLA-4S	40.0	20.0	8.0	6.0	3.0	3.0	1.6	
CGLA-6	51.0	38.2	9.2	6.4	3.4	3.2	1.6~1.7	
CGLA-8	81.0	60.0	8.0	6.0	3.0	3.0	1.6~1.8	250
CGLA-8(2)	81.0	60.0	8.0	6.0	3.0	3.0	1.8~2.1	
CGLA-8(8)	81.0	60.0	8.0	6.0	3.0	3.0	1.8	
CGLA-8(25)	81.0	60.0	8.0	6.0	3.0	3.0	2.5	
CGLA-9(1)	91.5	71.0	8.0	6.0	3.0	3.0	1.6~1.8	
CGLA-9(2)	91.5	71.0	8.0	6.0	3.0	3.0	1.8~2.1	



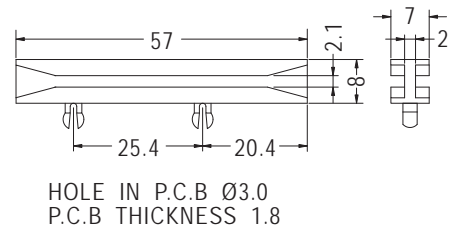
Part No.	Package
CGLA-10	200



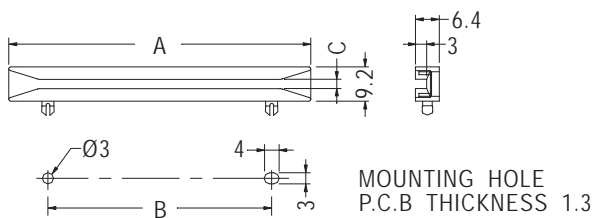
Part No.	Package
CGLA-11	500



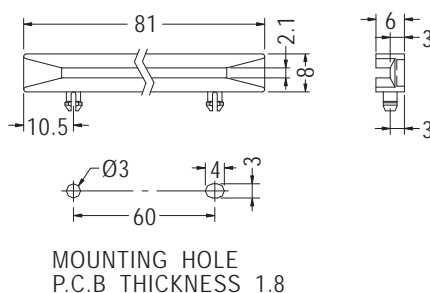
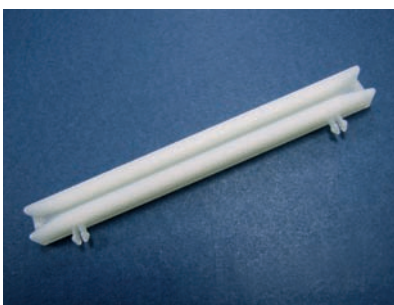
Part No.	Package
CGDLA-57	500



Part No.	Package
CGDLB-57	500



Part No.	A	B	C	Package
CGL-4	38.4	20.0	2.0	500
CGL-8	81.0	60.0	2.5	250



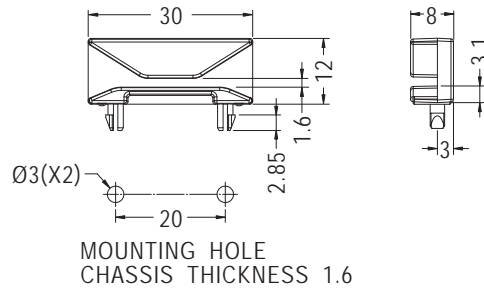
Part No.	Package
CGLC-8	500

PC板導槽 CARD GUIDE

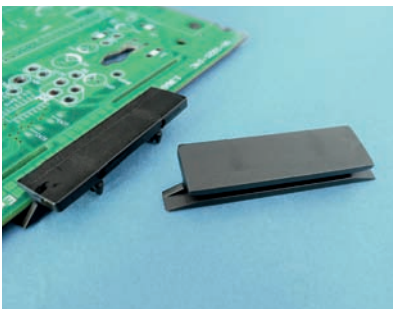
用途：固定PC板於機殼上，安裝方便，免螺絲。



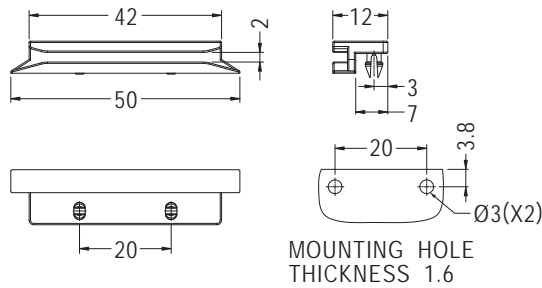
- Material: ABS (UL)
- Flame Class: 94V-0
- Color: Black
- Unit: mm



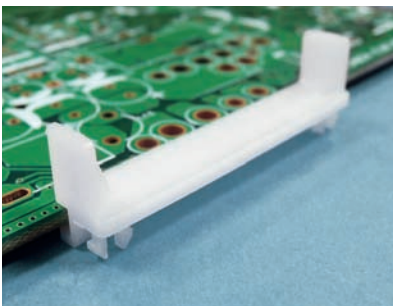
Part No.	Package
CG-30	500



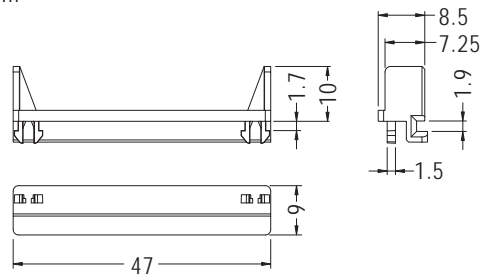
- Material: Nylon 66 (UL)
- Flame Class: 94V-2/94V-0
- Color: Natural/Black
- Unit: mm
- Patented (專利品)



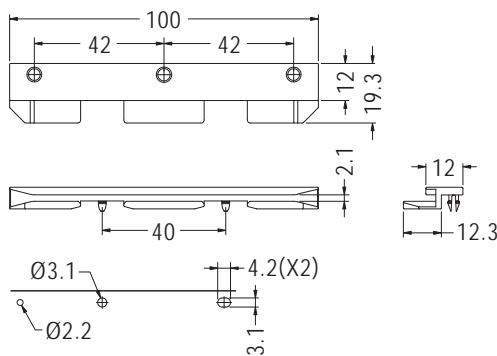
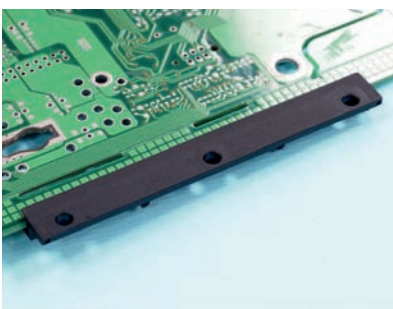
Part No.	Package
CGLD-50	500



- Material: Nylon 66 (UL)
- Flame Class: 94V-2/94V-0
- Color: Natural/Black
- Unit: mm



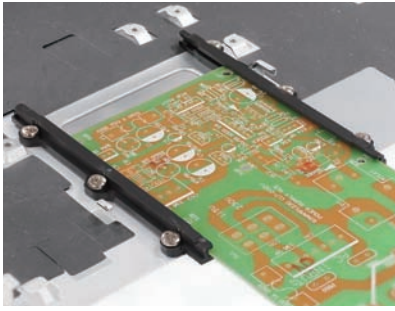
Part No.	Package
CGLG-47	1000



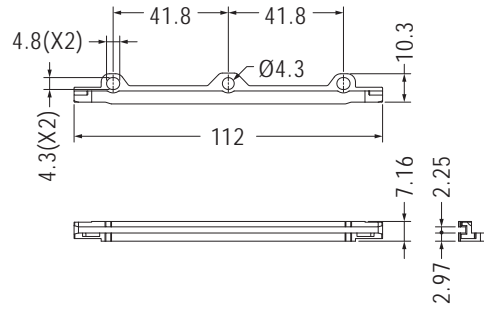
Part No.	Package
CGLI-100	1000

PC板導槽 CARD GUIDE

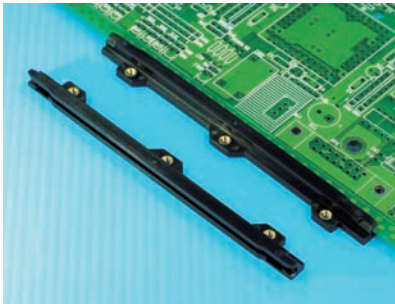
用途：固定OCP3.0板於機殼或PC板上，安裝方便。



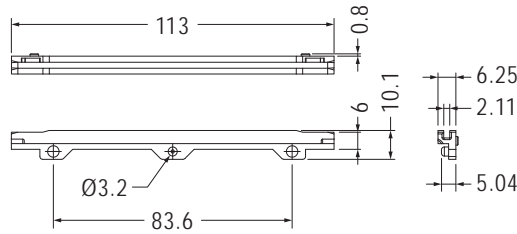
- Material: Nylon 66 (UL)
- Flame Class: 94V-0
- Color: Black
- Unit: mm



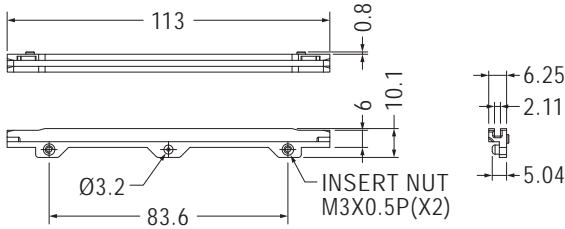
Part No.	Package
CGLN-9	250



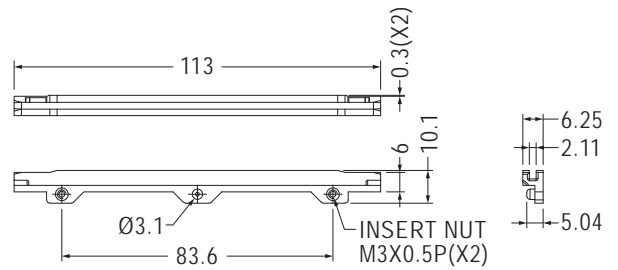
- Material: PC+ABS (UL)
- Flame Class: 94V-0
- Color: Black
- Unit: mm



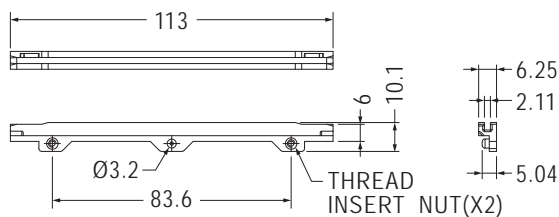
Part No.	Package
CGLM-1N	250



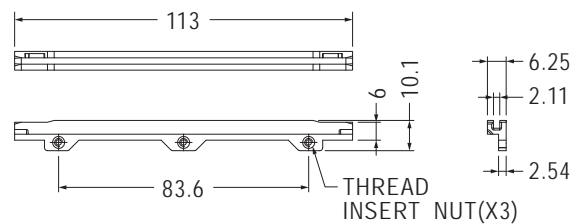
Part No.	Package
CGLM-1	250



Part No.	Package
CGLM-2	250



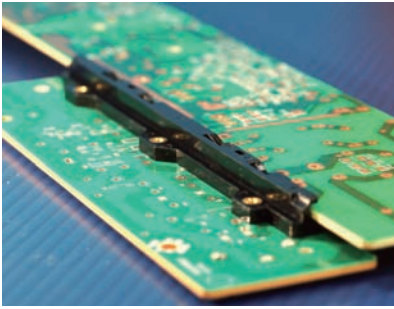
Part No.	Thread	Package
CGLM-113	M3X0.5P	250
CGLM-113-M2	M2X0.4P	



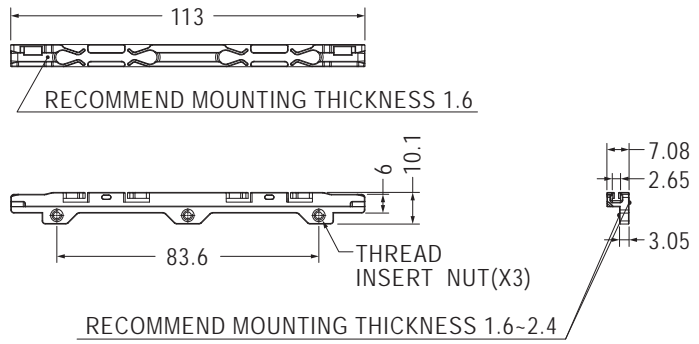
Part No.	Thread	Package
CGLN-113	M3X0.5P	250
CGLN-113-M2	M2X0.4P	

PC板導槽 CARD GUIDE

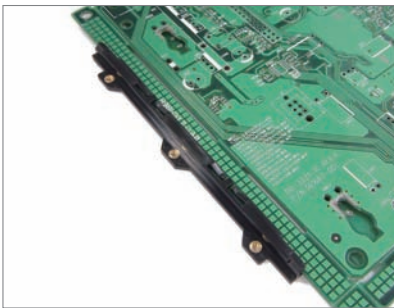
用途：固定OCP3.0板於機殼或PC板上，安裝方便。



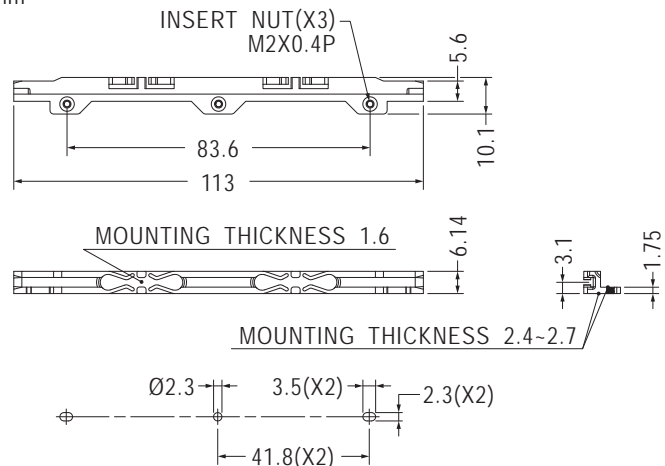
- Material: PC+ABS (UL)
- Flame Class: 94V-0
- Color: Black
- Unit: mm



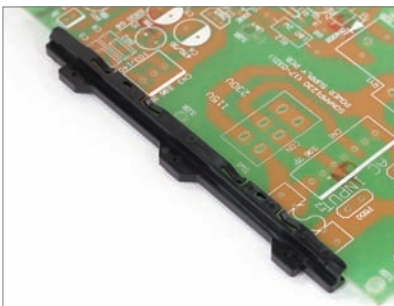
Part No.	Thread	Package
CGLN-2	M3X0.5P	250
CGLN-2-M2	M2X0.4P	



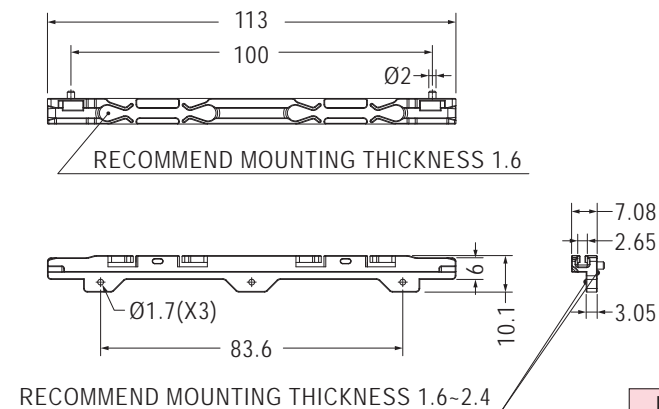
- Material: PC+ABS (UL)
- Nut Material: Brass
- Flame Class: 94V-0
- Color: Black
- Unit: mm



Part No.	Package
CGLN-6-M2	250



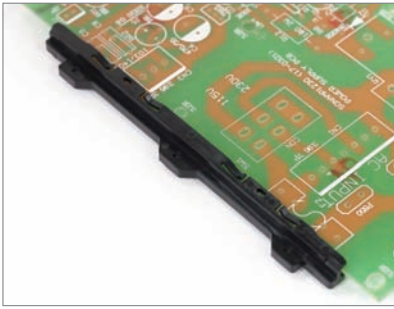
- Material: PC+ABS (UL)
- Flame Class: 94V-0
- Color: Black
- Unit: mm



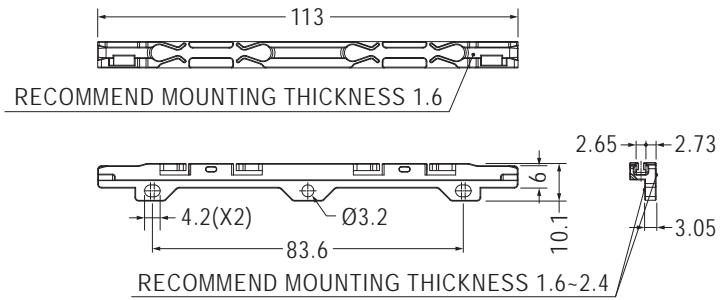
Part No.	Package
CGLN-3	250

PC板導槽 CARD GUIDE

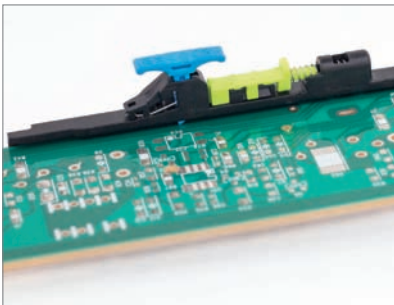
用途：固定OCP3.0板於機殼或PC板上，安裝方便。



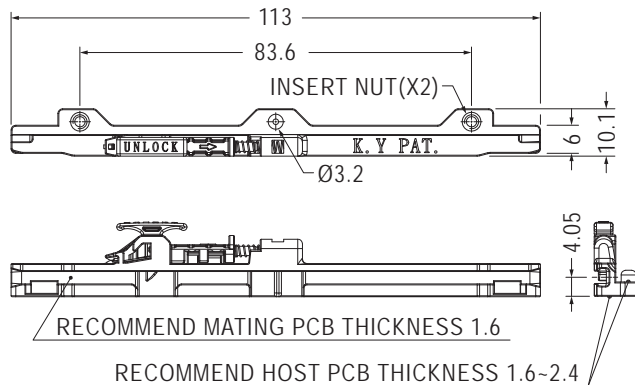
- Material: PC+ABS (UL)
- Flame Class: 94V-0
- Color: Black
- Unit: mm



Part No.	Package
CGLN-5	250



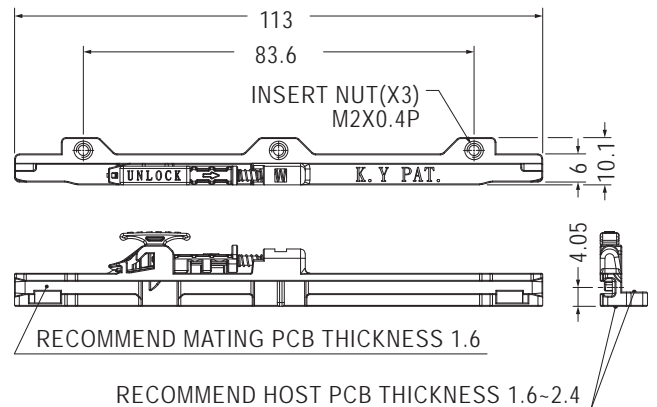
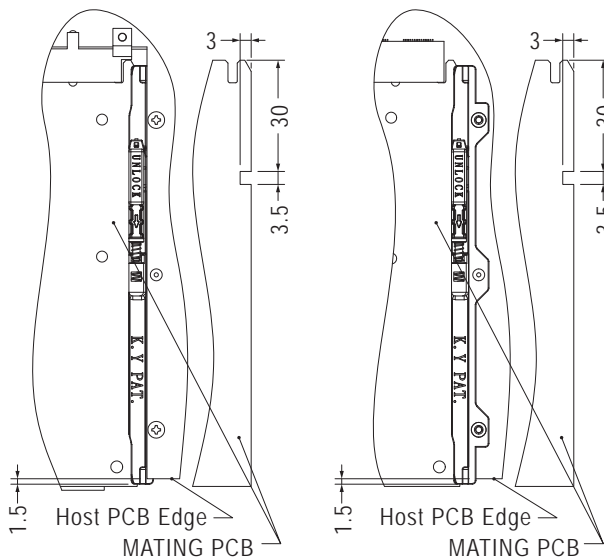
- Material: PC+ABS (UL)
- Flame Class: 94V-0
- Color: Black
- Unit: mm
- Patented (專利品)



Part No.	Package
CGLP-3F-M2	100

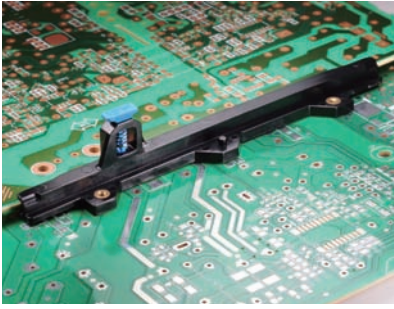


使用說明
Installation Step



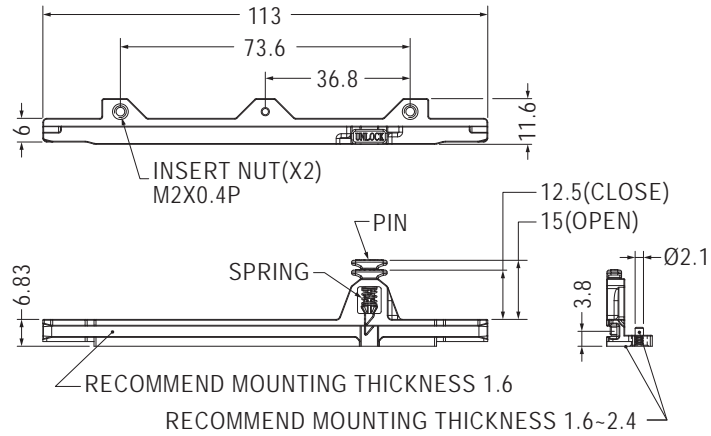
Part No.	Package
CGLP-5F-M2	100

PC板導槽 CARD GUIDE



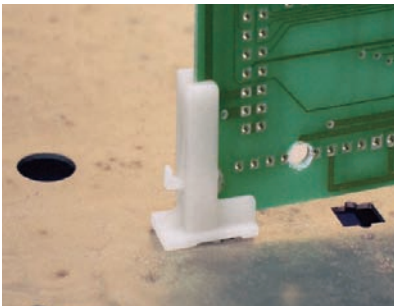
- Material: PC+ABS (UL)
- Pin Material: Nylon 66 (UL)
- Flame Class: 94V-0
- Nut Material: Brass
- Spring Material: Nickel Plated SWP
- Color: Black
- Pin Color: Blue
- Unit: mm
- Patented (專利品)

用途：固定OCP3.0板於機殼或PC板上，安裝方便。



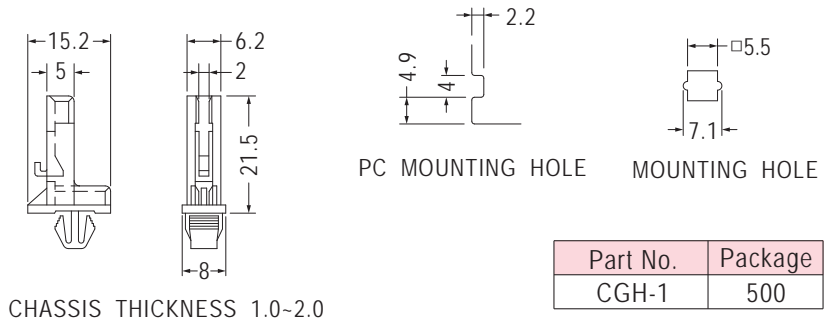
Part No.	Package
CGLP-4F-M2	100

直立式導槽 CARD GUIDE

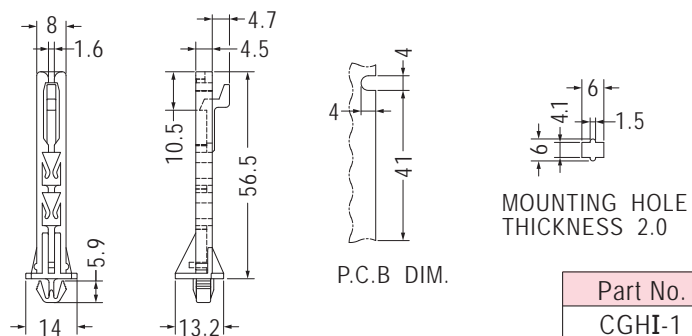
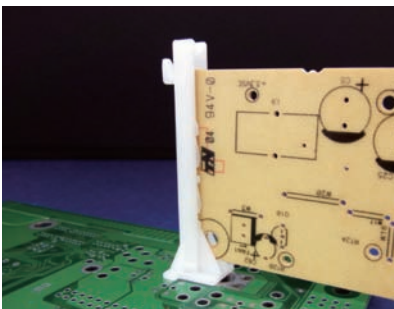


- Material: Nylon 66 (UL)
- Flame Class: 94V-2/94V-0
- Color: Natural/Black
- Unit: mm

用途：固定PC板於機殼或PC板上，安裝方便，免螺絲。



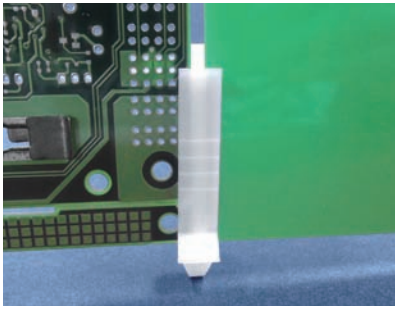
Part No.	Package
CGH-1	500



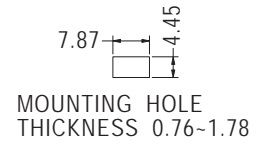
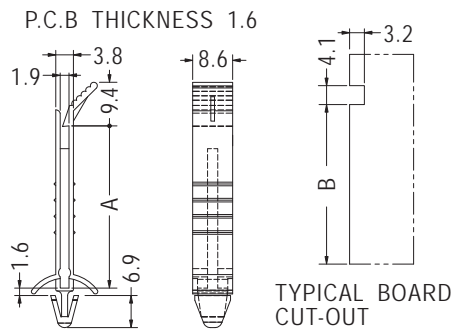
Part No.	Package
CGHI-1	500

直立式導槽 CARD GUIDE

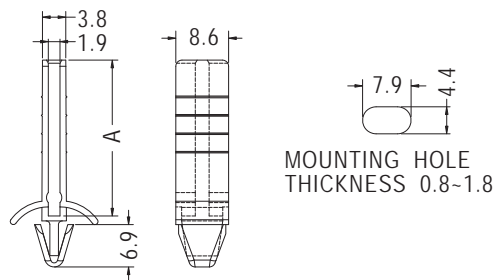
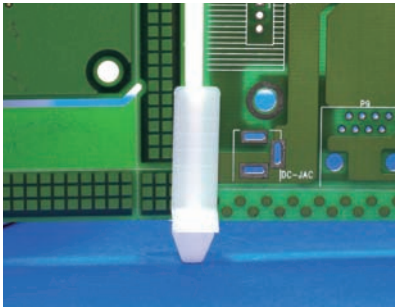
用途：固定PC板於機殼或PC板上，安裝方便，免螺絲。



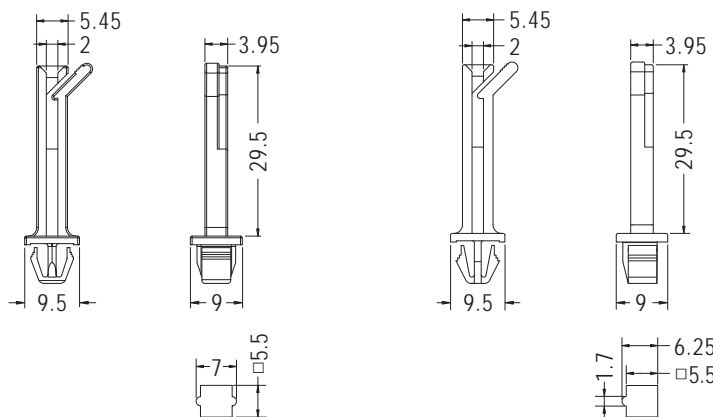
- Material: Nylon 66 (UL)
- Flame Class: 94V-2/94V-0
- Color: Natural/Black
- Unit: mm



Part No.	A	B	Package
CGHE-22.4	22.4	22.0	500
CGHE-34.9	34.9	34.5	
CGHE-47.5	47.5	47.1	
CGHE-73	73.0	72.6	



Part No.	A	Package
CGHC-25.4	25.4	500
CGHC-38.1	38.1	
CGHC-50.8	50.8	200
CGHC-76.2	76.2	



MOUNTING HOLE THICKNESS 1.2-1.8

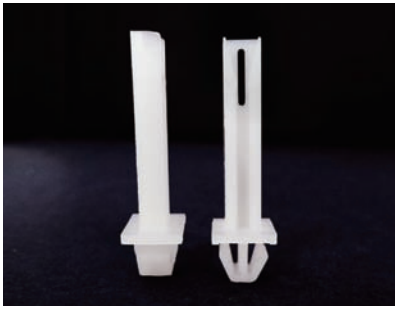
MOUNTING HOLE THICKNESS 2.0-3.0

Part No.	Package
CGH-31	500

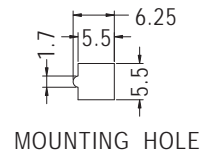
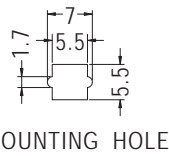
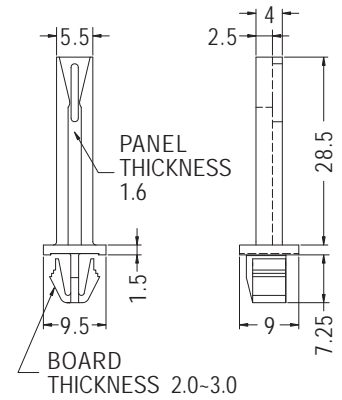
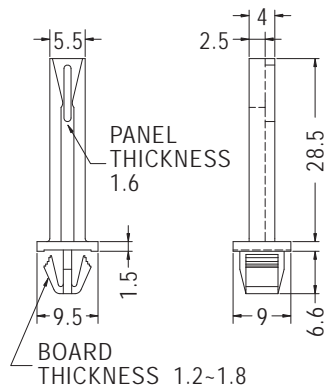
Part No.	Package
CGH-31L	500

直立式導槽 CARD GUIDE

用途：固定PC板於機殼或PC板上，安裝方便，免螺絲。

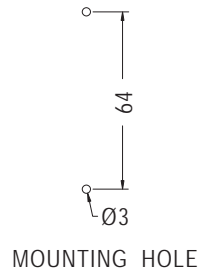
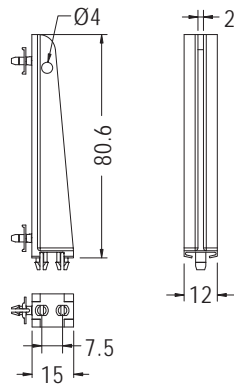
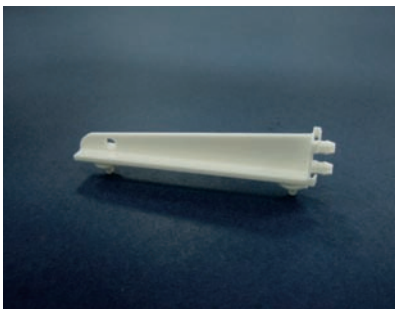


- Material: Nylon 66 (UL)
- Flame Class: 94V-2/94V-0
- Color: Natural/Black
- Unit: mm



Part No.	Package
CGH-37	1000

Part No.	Package
CGH-37L	1000

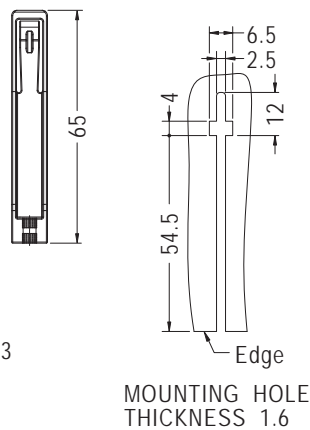
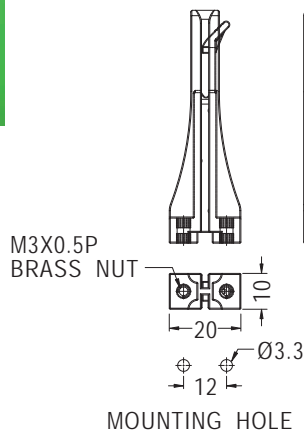


Part No.	Package
CGC-1	250



- Material: PC+ABS (UL)
- Flame Class: 94V-2
- Color: Black/Blue
- Unit: mm

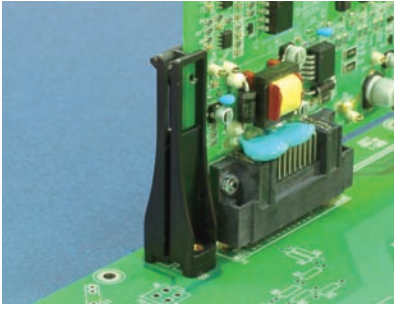
用途：配合螺絲固定PC板於機殼或PC板上，安裝牢固，不脫落。



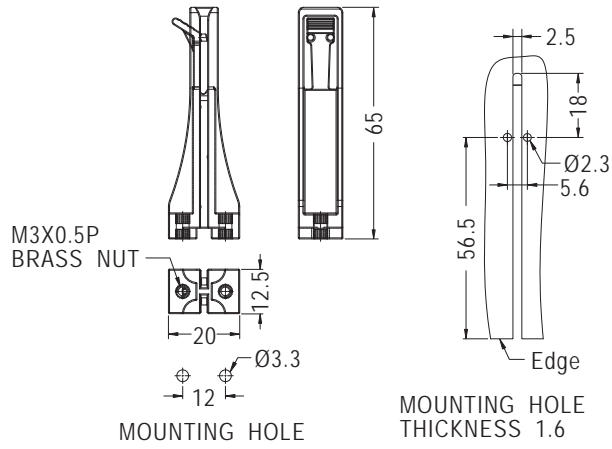
Part No.	Package
CGHA-65	500

直立式導槽 CARD GUIDE

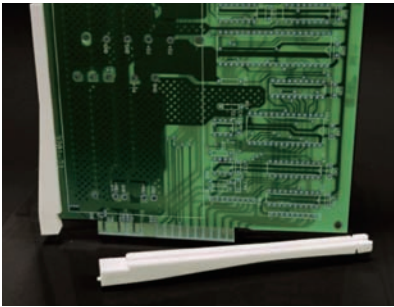
用途：配合螺絲固定PC板於機殼或PC板上，安裝牢固，不脫落。



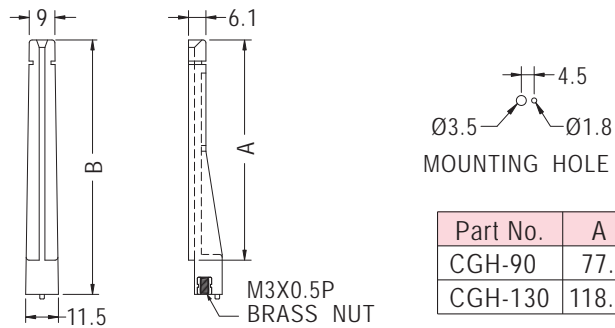
- Material: PC+ABS (UL)
- Flame Class: 94V-2/94V-0
- Color: Black/Blue
- Unit: mm



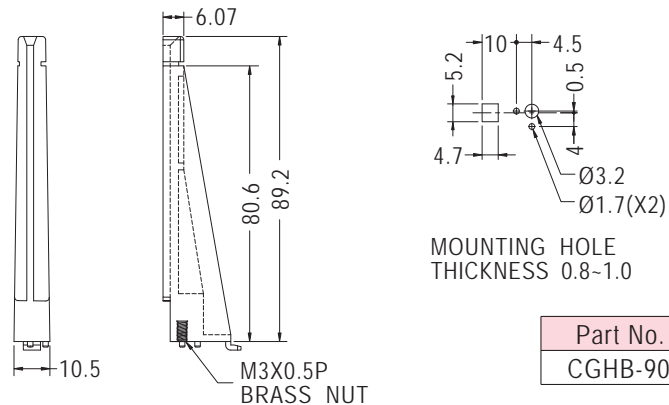
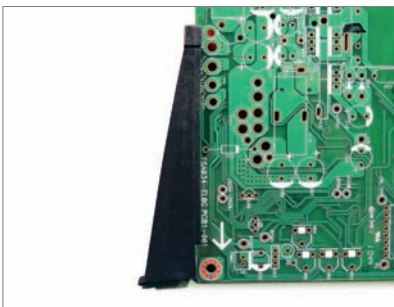
Part No.	Package
CGHB-65	500



- Material: Nylon 66 (UL)
- Flame Class: 94V-2/94V-0
- Color: Natural/Black
- Unit: mm

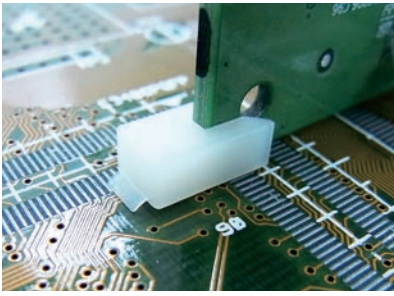


Part No.	A	B	Package
CGH-90	77.2	89.2	200
CGH-130	118.5	130.0	100

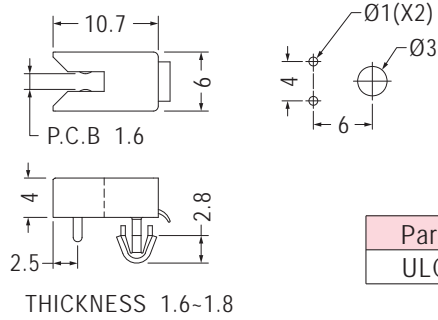


Part No.	Package
CGHB-90	1000

用途：固定PC板於機板上，成90°不晃動。



- Material: Nylon 66 (UL)
- Flame Class: 94V-2/94V-0
- Color: Natural/Black
- Unit: mm

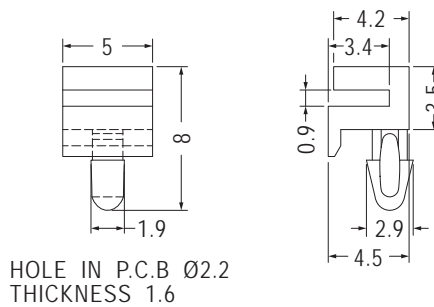


Part No.	Package
ULCG-1	1000

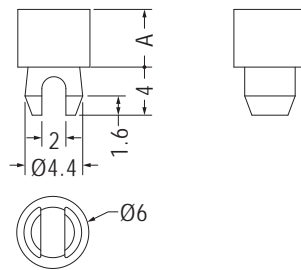
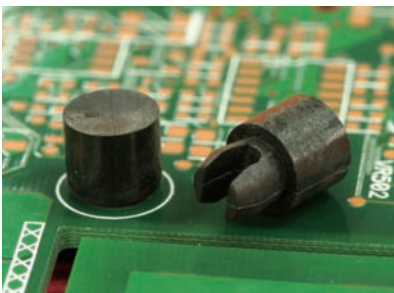


- Material: Nylon 66 (UL)
- Flame Class: 94V-2/94V-0
- Color: Natural/Black
- Unit: mm

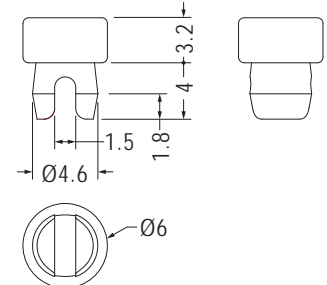
用途：固定PC板於機殼上，安裝方便，免螺絲。



Part No.	Package
ULCG-2	1000



HOLE IN CHASSIS Ø4.3
BOARD THICKNESS 1.6-2.0

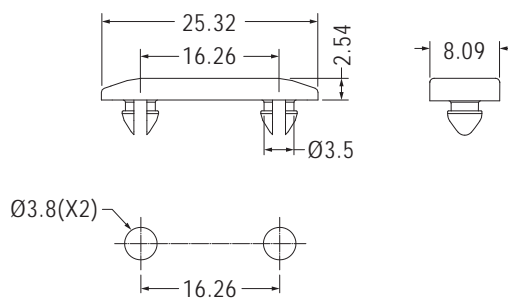


MOUNTING HOLE Ø4.5
THICKNESS 1.6

- Flame Class: 94HB
- Color: Black

Part No.	A	Package
CGB-2	2.0	2000
CGB-6	4.8	

Part No.	Package
CGB-3.2	2000



MOUNTING HOLE
THICKNESS 1.2

Part No.	Package
INTEC-1	500