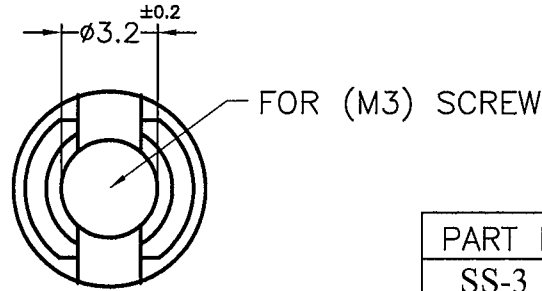
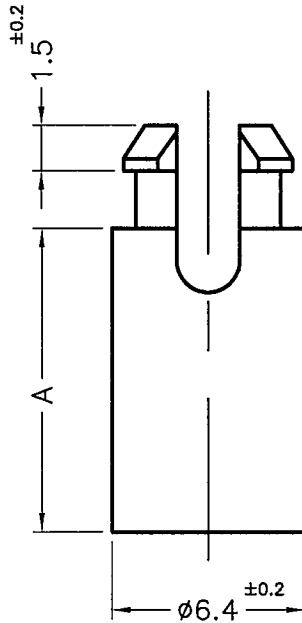


DIM.	TOL
5mm DOWN	±0.2
5~20mm	±0.3
20~40mm	±0.4
40~60mm	±0.5
60~100mm	±0.8
100mm UP	±1.0



HOLE IN P.C.B: $\phi 4.8$
P.C.B THICKNESS: 1.2~1.7



PART NO.	A
SS-3	3.2
SS-3.5	3.5
SS-4	4.0
SS-4.5	4.5
SS-5	4.8
SS-5A	5.0
SS-6	6.4
SS-8	7.9
SS-10	9.5
SS-11	11.1
SS-12	12.7
SS-12A	12.0
SS-14	14.2
SS-14.5	14.55
SS-15	15.0
SS-16	15.9
SS-17.2	17.2
SS-19	19.1
SS-22	22.2
SS-25	25.4



康揚企業股份有限公司
KANG YANG HARDWARE ENTERPRISE CO., LTD.
康揚塑膠(東莞)有限公司
KANG YANG PLASTIC(DONG GUAN)CO.,LTD.
康哲電腦配件(吳江)有限公司
KANG CHE COMPUTER COMPONENTS(WUJIANG)CO.,LTD.

PROPRIETARY AND CONFIDENTIAL THE INFORMATION CONTAINED IN THIS DRAWING IS THE SOLE PROPERTY OF KANG YANG HARDWARE ENTERPRISE CO. ANY REPRODUCTION IN PART OR AS A WHOLE WITHOUT THE WRITTEN PERMISSION OF KANG YANG HARDWARE ENTERPRISE CO. IS PROHIBITED. DO NOT SCALE DRAWING	DATE	TITLE		DWG. NO.	PART NO.	
	2001.03.07	SPACER SPPORT		SS-H	SEE ABOVE	
	DRAWN	MATERIAL				
	JASON	NYLON 66 UL94V-2				
CHECKED	COLOR	FINISH	SIZE	SPEC. DWG.	REV	C
<i>[Signature]</i>	NATURAL		A4			
APPROVED	UNLESS OTHERWISE SPECIFIED TOLERANCE:		SCALE: NONE	UNIT	mm	SHEET 1 OF 1
<i>[Signature]</i>	SEE ABOVE					