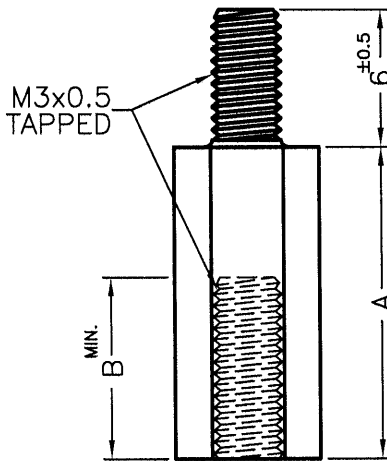
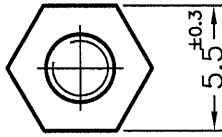


DIM	TOL
5mm DOWN	±0.2
5~20mm	±0.3
20~40mm	±0.4
40~60mm	±0.5
60~100mm	±0.8
100mm UP	±1.0


REVISIONS			
REV	DESCRIPTION	DATE	BY



PART NO.	A	B
TP-4	4.0	3.0
TP-5	5.0	3.0
TP-6	6.0	4.0
TP-7	7.0	5.0
TP-7.5	7.5	5.0
TP-8	8.0	6.0
TP-8.5	8.5	6.0
TP-9	9.0	6.0
TP-9.5	9.5	6.0
TP-10	10.0	6.0
TP-10.5	10.5	6.0
TP-10.8L	10.8	6.0
TP-11	11.0	6.0
TP-12	12.7	6.0
TP-12A	12.0	6.0
TP-13	13.0	6.0
TP-14	14.0	6.0
TP-15	15.0	6.0
TP-15.5	15.5	6.0
TP-16	16.0	6.0
TP-16.5	16.5	6.0
TP-17	17.0	6.0

PART NO.	A	B
TP-18	18.0	6.0
TP-18.5	18.5	6.0
TP-19	19.0	6.0
TP-20	20.0	8.0
TP-21	21.0	6.0
TP-22	22.0	6.0
TP-24.5	24.5	6.0
TP-25	25.0	6.0
TP-27	27.0	6.0
TP-28	28.0	6.0
TP-28.5	28.5	6.0
TP-30	30.0	8.0
TP-33	33.0	6.0
TP-34.5	34.5	6.0
TP-35	35.0	6.0
TP-36	36.0	6.0
TP-40	40.0	6.0
TP-45	45.0	6.0
TP-53.5	53.5	6.0

NOTE: 1. INNER THREAD WAS DONE BY 2ND PROCESS TAPING.
 SONE SLIGHT NYLON BURRS REMAINED INSIDE THE THREAD HOLE IS A NORMAL PHENOMENON.
 此為二次攻牙, 且因為尼龍材質緣故, 所以穴孔有些許尼龍屑, 屬正常現象。
 2. MADE OF EQUIVALENT MATERIAL.
 均可使用同等材質。

 康揚企業股份有限公司 KANG YANG HARDWARE ENTERPRISE CO., LTD. 康揚塑膠(東莞)有限公司 KANG YANG PLASTIC(DONG GUAN) CO., LTD. ISO 9001 ISO 14001 QC 080000 康哲電腦配件(吳江)有限公司 KANG CHE COMPUTER COMPONENTS(WUJIANG) CO., LTD.				TITLE	SPEC. DWG.	
				TREHREADED SPACER	DATE	2004.01.07
PART NUMBER				MATERIAL	DRAWN	
SEE ABOVE				NYLON 66 UL94V-2	JASON	
DRAWING NUMBER				FINISH	CHECK	
TP-H				NATURAL	彭永承	
SIZE	SCALE	UNIT	REV	COLOR	APPROVED	
A4	NONE	mm	P	UNLESS OTHERWISE SPECIFIED TOLERANCE SEE ABOVE	Kang	