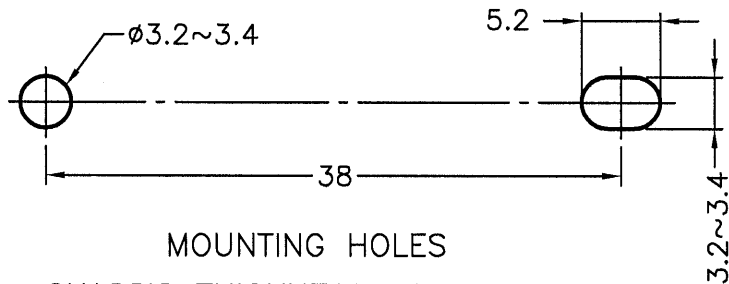
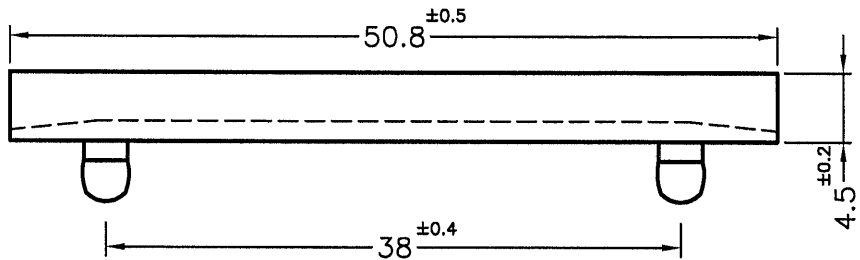
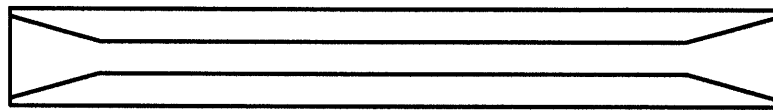
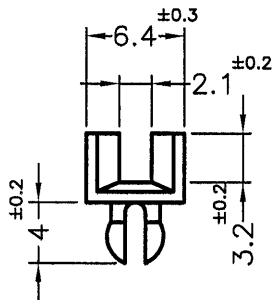



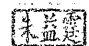

| REVISIONS |             |      |    |
|-----------|-------------|------|----|
| REV       | DESCRIPTION | DATE | BY |
|           |             |      |    |
|           |             |      |    |



MOUNTING HOLES  
CHASSIS THICKNESS:0.8~1.2mm

| PART NO.   | MATERIAL         | COLOR   |
|------------|------------------|---------|
| CG-50      | NYLON 66 UL94V-2 | NATURAL |
| CG-50V0(B) | NYLON 66 UL94V-0 | BLACK   |

NOTE:MADE OF EQUIVALENT MATERIAL.  
使用同等材質

|  |           |                |       |                                      |            |            |   |
|--|-----------|----------------|-------|--------------------------------------|------------|------------|---|
|  <p>康揚企業股份有限公司<br/>KANG YANG HARDWARE ENTERPRISE CO., LTD.<br/>康揚塑膠(東莞)有限公司<br/>KANG YANG PLASTIC(DONG GUAN) CO.,LTD.<br/>康哲電腦配件(吳江)有限公司<br/>KANG CHE COMPUTER COMPONENTS(WUJIANG) CO.,LTD.</p> |           |                |       | TITLE                                | CARD GUIDE | SPEC. DWG. |   |
|  |           |                |       | MATERIAL                             | SEE ABOVE  | DATE       | 1999.03.11  |
|  |           |                |       | FINISH                               |            | DRAWN      | JASON   |
|  |           |                |       | COLOR                                | SEE ABOVE  | CHECK      |  |
| PART NUMBER  | SEE ABOVE | DRAWING NUMBER | CG-50 | UNLESS OTHERWISE SPECIFIED TOLERANCE | SEE ABOVE  | APPROVED   |  |
| SIZE   | A4        | SCALE          | 2:1   | UNIT                                 | mm         | REV        | B   |