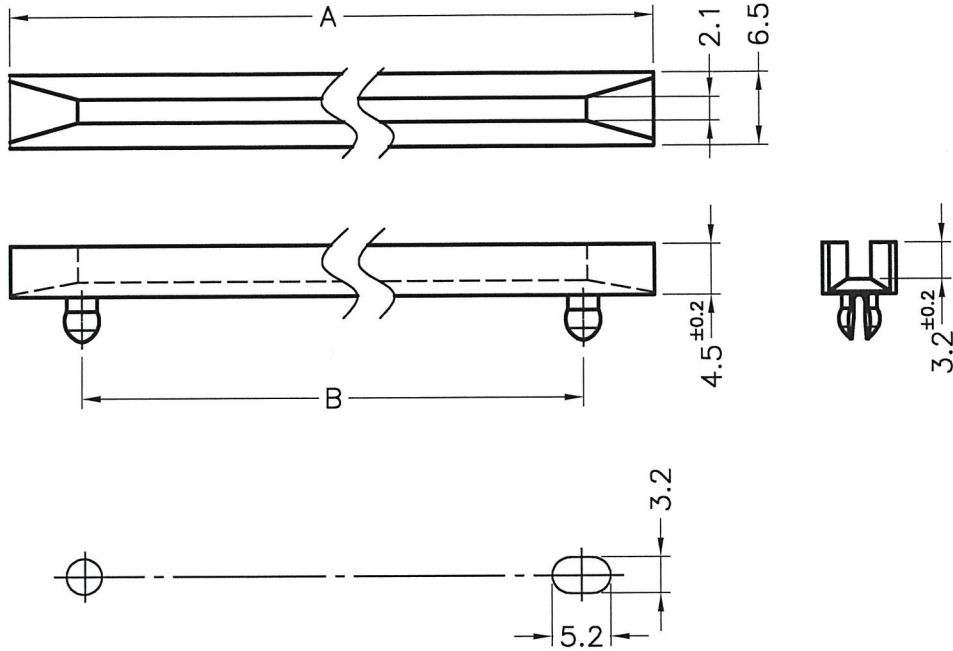


DIM.	TOL
L≤10	±0.2
10<L≤30	±0.3
30<L≤50	±0.5
50<L≤100	±0.7
100<L≤250	±1.2
ABOVE 250	±1.5



MOUNTING HOLES  
CHASSIS THICKNESS:0.8~1.2

- NOTE: 1. ALL MEASUREMENT DOES NOT INCLUDE GATE WHICH RAISES UNDER 0.3mm.  
 所有尺寸量測皆不含進膠口, 膠口凸出0.3mm之內。  
 2. MADE OF EQUIVALENT MATERIAL.  
 可使用同等材質。

PART NO.	A	B	COLOR
CG-250	63.5	50.8	NATURAL
CG-250(B)			BLACK
CG-300	76.2	63.5	NATURAL
CG-300(B)			BLACK
CG-350	88.9	76.2	NATURAL
CG-350(B)			BLACK
CG-400	101.6	88.9	NATURAL
CG-400(B)			BLACK

PART NO.	A	B	COLOR
CG-450	114.3	101.6	NATURAL
CG-450(B)			BLACK
CG-500	127.0	114.3	NATURAL
CG-500(B)			BLACK
CG-550	139.7	127.0	NATURAL
CG-550(B)			BLACK
CG-600	152.4	139.7	NATURAL
CG-600(B)			BLACK



康揚企業股份有限公司  
 KANG YANG HARDWARE ENTERPRISE CO., LTD.  
 康揚塑膠(東莞)有限公司  
 KANG YANG PLASTIC(DONG GUAN)CO., LTD.  
 康哲電腦配件(吳江)有限公司  
 KANG CHE COMPUTER COMPONENTS(WUJIANG)CO., LTD.

PROPRIETARY AND CONFIDENTIAL THE INFORMATION CONTAINED IN THIS DRAWING IS THE SOLE PROPERTY OF KANG YANG HARDWARE ENTERPRISE CO. ANY REPRODUCTION IN PART OR AS A WHOLE WITHOUT THE WRITTEN PERMISSION OF KANG YANG HARDWARE ENTERPRISE CO. IS PROHIBITED.  DO NOT SCALE DRAWING	DATE 1998.04.17	TITLE CARD GUIDE	DWG. NO. CG-H	PART NO. SEE ABOVE
	DRAWN JASON	MATERIAL NYLON 66 UL94V-2	SIZE A4	SPEC. DWG.
	CHECKED <b>Yuping</b>	COLOR SEE ABOVE	FINISH	REV F
	APPROVED <i>Kang</i>	UNLESS OTHERWISE SPECIFIED TOLERANCE: SEE ABOVE	SCALE: 2:3	UNIT mm