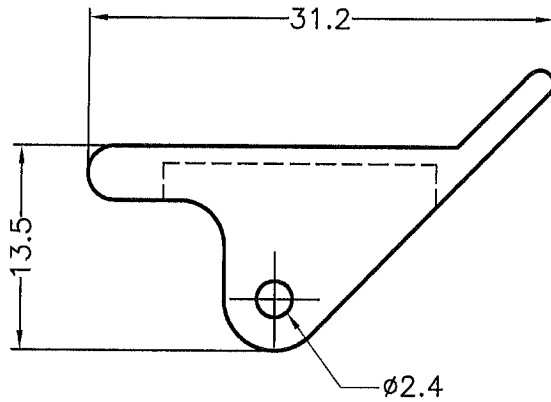
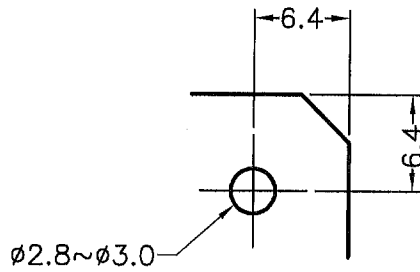
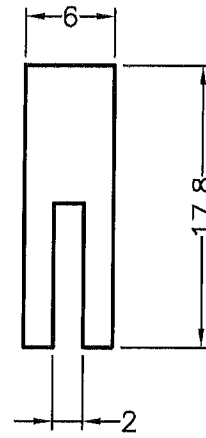


DIM.	TOL
5mm DOWN	±0.2
5~20mm	±0.3
20~40mm	±0.4
40~60mm	±0.5
60~100mm	±0.8
100mm UP	±1.0

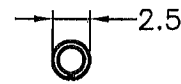
REVISIONS			
REV	DESCRIPTION	DATE	BY



(CARD PULLER)



MOUNTING HOLE


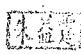


(PIN)

NOTE: All measurement does not include gate which raises under 0.3mm.

PART NO.	MATERIAL	COLOR
CP-15	NYLON 66 UL94V-2	NATURAL
CP-15V0	NYLON 66 UL94V-0	NATURAL(WHITE)
CP-15P	POM UL94HB	NATURAL

符合歐盟ROHS規範 (RoHS Compliant)	
★鉛Pb	<1000PPM
★鎘Cd	< 100PPM
★汞Hg	<1000PPM
★六價鉻Cr6+	<1000PPM
★多溴聯苯類PBBs	<1000PPM
★多溴聯苯醚類PBDEs	<1000PPM

 <p>康揚企業股份有限公司 KANG YANG HARDWARE ENTERPRISE CO., LTD. 康揚塑膠(東莞)有限公司 KANG YANG PLASTIC(DONG GUAN) CO., LTD. 康哲電腦配件(吳江)有限公司 KANG CHE COMPUTER COMPONENTS(WUJIANG) CO., LTD.</p>	TITLE CARD PULLER		SPEC. DWG.	
	MATERIAL SEE ABOVE		DATE 1998.10.06	
	HARDNESS		DRAWN JASON	
	COLOR SEE ABOVE		CHECK 	
PART NUMBER SEE ABOVE		DRAWING NUMBER CP-15H		UNLESS OTHERWISE SPECIFIED TOLERANCE SEE ABOVE
SIZE A4	SCALE 2:1	UNIT mm	REV A	APPROVED 