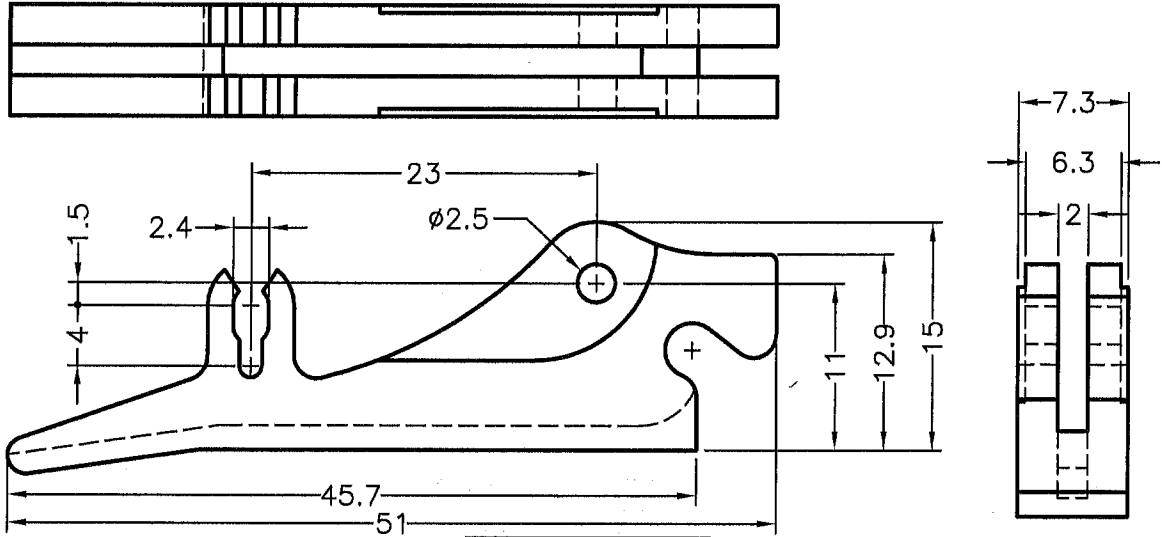
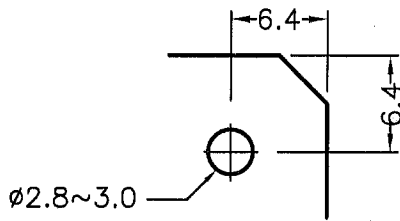


DIM.	TOL
5mm DOWN	±0.2
5~20mm	±0.3
20~40mm	±0.4
40~60mm	±0.5
60~100mm	±0.8
100mm UP	±1.0

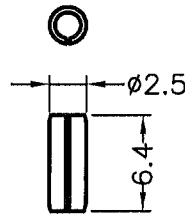
REVISIONS			
REV	DESCRIPTION	DATE	BY



PULLER X 1PCS



MOUNTING HOLE




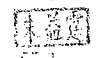
PIN X 2PCS

NOTE:1. All measurement does not include gate which raises under 0.3mm.
2. Shrinking is normal status.

PART NO.	PULLER'S MATERIAL	PULLER'S COLOR
CP-37	NYLON 66 UL94V-2	NATURAL
CP-37(B)		BLACK
CP-37V0	NYLON 66 UL94V-0	NATURAL(WHITE)
CP-37V0(B)		BLACK

康揚符合歐盟ROHS規範 (K. Y. Accord EU RoHS Compliant)

★鉛Pb	<1000PPM
★鎘Cd	< 100PPM
★汞Hg	<1000PPM
★六價鉻Cr6+	<1000PPM
★多溴聯苯類PBBs	<1000PPM
★多溴聯苯醚類PBDEs	<1000PPM

 康揚企業股份有限公司 KANG YANG HARDWARE ENTERPRISE CO., LTD. 康揚塑膠(東莞)有限公司 KANG YANG PLASTIC(DONG GUAN) CO.,LTD. 康哲電腦配件(吳江)有限公司 KANG CHE COMPUTER COMPONENTS(WUJIANG) CO.,LTD.				TITLE	CARD PULLER	SPEC. DWG	
				PULLER'S MATERIAL/COLOR	SEE ABOVE	DATE	2005.01.28
PART NUMBER	SEE ABOVE	DRAWING NUMBER	CP-37	PIN'S MATERIAL/ COLOR	STEEL / BLACK	DRAWN	JASON
SIZE	A4	SCALE	2:1	PULLER'S COLOR	SEE ABOVE	CHECK	
UNIT	mm	REV	B	UNLESS OTHERWISE SPECIFIED TOLERANCE	SEE ABOVE	APPROVED	