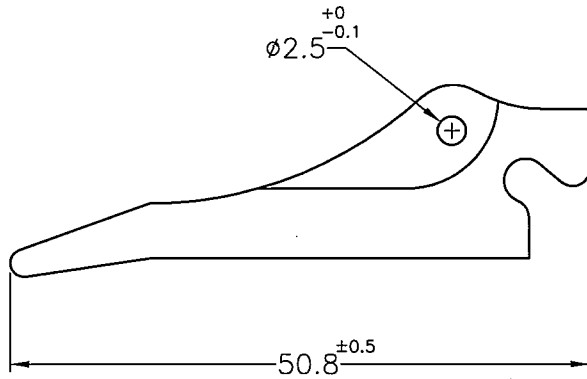
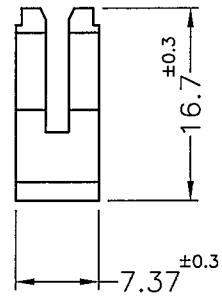


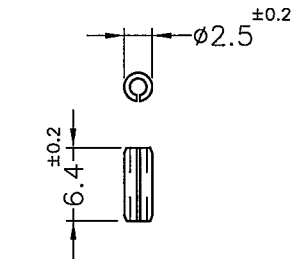
WITH HALOGEN  
有鹵料件



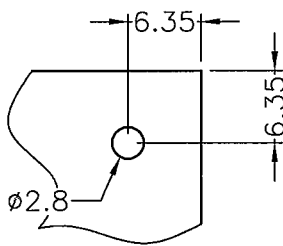
BODY



PART NO.	COLOR
CP-38VG	NATURAL
CP-38VG(B)	BLACK



PIN  
MATERIAL:STEEL



MOUNTING HOLE  
THICKNESS:1.6mm

- NOTE: 1. THE MTEAL PART CANNOT BE ACCURATE ROUND DUE THE CRAFT OF STAINLESS MATERIAL BENDING.  
因工藝問題不銹鋼折彎無法正圓。  
2. THE COLOR BATCH TEST REPORT IS ONLY FOR FIRST LOT TEST.  
色母環保檢測報告, 僅提供原始測試報告。  
3. SHRINKING IS NORMAL STATUS.  
內縮為正常現象。  
2. MADE OF EQUIVALENT MATERIAL.  
可使用同等材質。



康揚企業股份有限公司  
KANG YANG HARDWARE ENTERPRISE CO., LTD.  
康揚塑膠(東莞)有限公司  
KANG YANG PLASTIC(DONG GUAN)CO.,LTD.  
康哲電腦配件(吳江)有限公司  
KANG CHE COMPUTER COMPONENTS(WUJIANG)CO.,LTD.

PROPRIETARY AND CONFIDENTIAL THE INFORMATION CONTAINED IN THIS DRAWING IS THE SOLE PROPERTY OF KANG YANG HARDWARE ENTERPRISE CO. ANY REPRODUCTION IN PART OR AS A WHOLE WITHOUT THE WRITTEN PERMISSION OF KANG YANG HARDWARE ENTERPRISE CO. IS PROHIBITED.  DO NOT SCALE DRAWING	DATE	2008.03.10	TITLE	VARD PULLER		DWG. NO.	CP-38		PART NO.	SEE ABOVE	
	DRAWN	BUNNY		MATERIAL	NYLON 66 UL94V-0+GF		SIZE	A4		SPEC. DWG	REV
	CHECKED			COLOR	SEE ABOVE		FINISH			B	
	APPROVED	Kang		UNLESS OTHERWISE SPECIFIED TOLERANCE: SEE ABOVE		SCALE:	3:2		UNIT	mm	