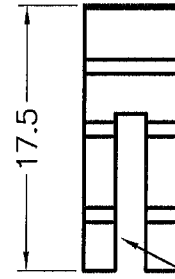
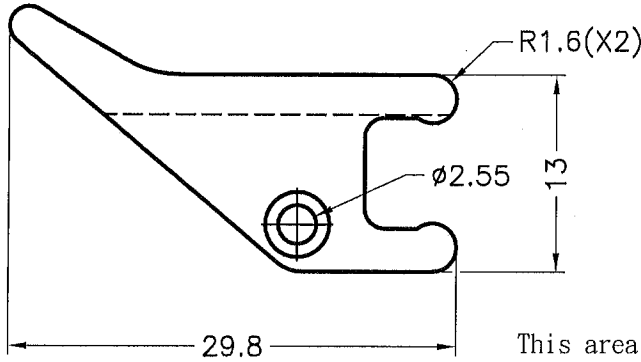


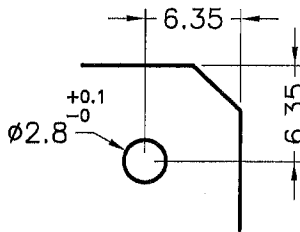
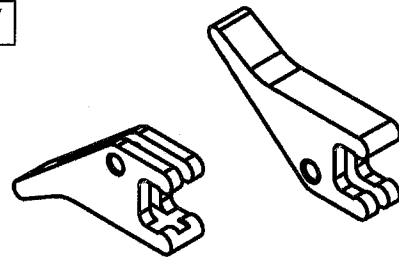
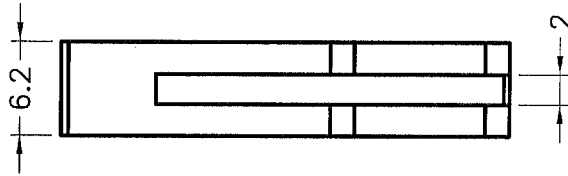
DIM.	TOL
5mm DOWN	±0.2
5~20mm	±0.3
20~40mm	±0.4
40~60mm	±0.5
60~100mm	±0.8
100mm UP	±1.0

REVISIONS			
REV	DESCRIPTION	DATE	BY

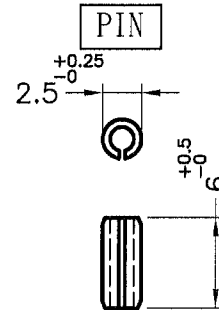


This area shrinking inward is normal phenomenon.

BODY



MOUNTING HOLE
THICKNESS:1.6mm






MATERIAL:STEEL

NOTE:All measurement does not include gate which raises under 0.3mm.

康揚符合歐盟ROHS規範 (K.Y. Accord EU RoHS Compliant)

★鉛Pb	<1000PPM
★鎘Cd	< 100PPM
★汞Hg	<1000PPM
★六價鉻Cr6+	<1000PPM
★多溴聯苯類PBBs	<1000PPM
★多溴聯苯醚類PBDEs	<1000PPM

 <p>康揚企業股份有限公司 KANG YANG HARDWARE ENTERPRISE CO., LTD. 康揚塑膠(東莞)有限公司 KANG YANG PLASTIC(DONG GUAN) CO., LTD. 康哲電腦配件(吳江)有限公司 KANG CHE COMPUTER COMPONENTS(WUJIANG) CO., LTD.</p>		TITLE	CARD PULLER	SPEC. DWG.			
		BODY MATERIAL	NYLON 66 UL94V-2	DATE	2013.11.29		
		PIN MATERIAL	STEEL	DRAWN	Emily		
		COLOR	NATURAL	CHECK			
PART NUMBER	CP-90	DRAWING NUMBER	CP-90	UNLESS OTHERWISE SPECIFIED TOLERANCE	SEE ABOVE	APPROVED	
SIZE	A4	SCALE	2:1	UNIT	mm	REV	B