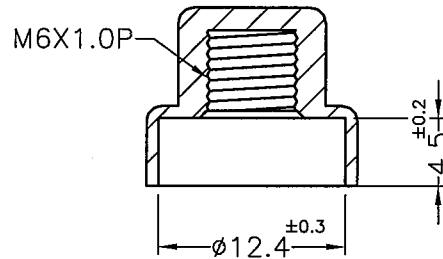
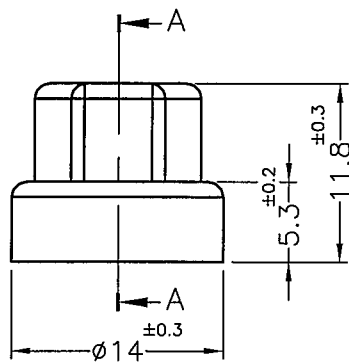
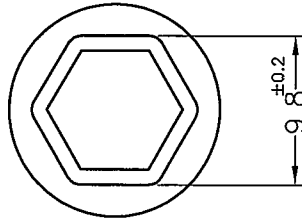


WITH HALOGEN
有鹵料件



SECTION A-A

| PART NO. | COLOR |
|-------------|----------------|
| MP6-1PBT | NATURAL(WHITE) |
| MP6-1PBT(B) | BLACK |

NOTE:1. MADE OF EQUIVALENT MATERIAL.

均可使用同等材質。

2. THE COLOR BATCH TEST REPORT IS ONLY FOR FIRST LOT TEST.

色母環保檢測報告, 僅提供原始測試報告。

3. SOME SLIGHT NYLON BURRS REMAINED

INSIDE THE THREAD HOLE IS A NORMAL PHENOMENON.

螺牙孔內有些許輕微毛邊屬正常現象



康揚企業股份有限公司
KANG YANG HARDWARE ENTERPRISE CO., LTD.
康揚塑膠(東莞)有限公司
KANG YANG PLASTIC(DONG GUAN)CO.,LTD.
康哲電腦配件(吳江)有限公司
KANG CHE COMPUTER COMPONENTS(WUJIANG)CO.,LTD.

| | | | | | |
|---|---------------------------------------|----------------|------------|-----------|--------------|
| PROPRIETARY AND CONFIDENTIAL THE INFORMATION CONTAINED IN THIS DRAWING IS THE SOLE PROPERTY OF KANG YANG HARDWARE ENTERPRISE CO. ANY REPRODUCTION IN PART OR AS A WHOLE WITHOUT THE WRITTEN PERMISSION OF KANG YANG HARDWARE ENTERPRISE CO. IS PROHIBITED. | DATE | TITLE | DWG. NO. | PART NO. | |
| | 2013.11.25 | SCREW BONNET | MP6-1 | SEE ABOVE | |
| | DRAWN | MATERIAL | | SPEC. DWG | REV |
| | Y.C.P | PBT UL94V-0+GF | A | | |
| CHECKED | COLOR | FINISH | SIZE | UNIT | SHEET 1 OF 1 |
| 李柏賢 | SEE ABOVE | | A4 | mm | |
| APPROVED | UNLESS OTHERWISE SPECIFIED TOLERANCE: | | SCALE: 2:1 | | |
| Kang | SEE ABOVE | | | | |

DO NOT SCALE DRAWING