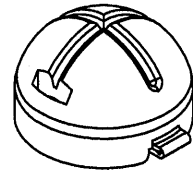
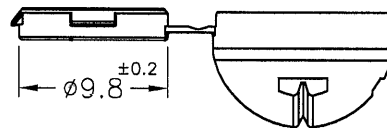
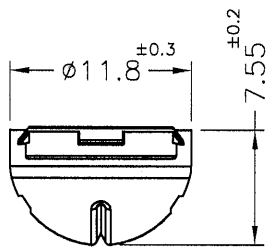
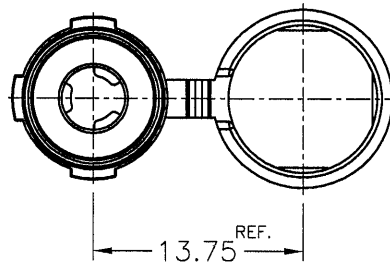


Patented Product

專利產品

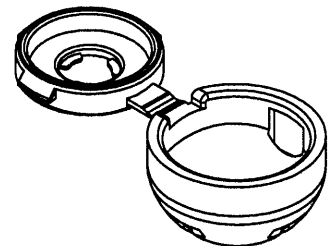
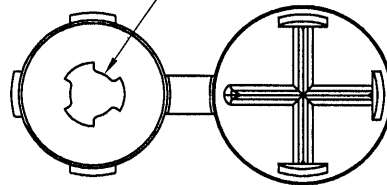
REVISIONS

REV	DESCRIPTION	DATE	BY



CLOSE

Assembly screw NO. 6-32



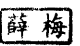
OPEN

PART NO.	MATERIAL	COLOR
SCW-5	NYLON 66 UL94V-2	NATURAL
SCW-5(B)	NYLON 66 UL94V-2	BLACK
SCW-5V0	NYLON 66 UL94V-0	NATURAL(WHITE)
SCW-5V0(B)	NYLON 66 UL94V-0	BLACK

NOTE:MADE OF EQUIVALENT MATERIAL.

均可使用同等材質


康揚企業股份有限公司
 KANG YANG HARDWARE ENTERPRISE CO., LTD.
康揚塑膠(東莞)有限公司
 KANG YANG PLASTIC(DONG GUAN)CO.,LTD.
康哲電腦配件(吳江)有限公司
 KANG CHE COMPUTER COMPONENTS(WUJIANG) CO.,LTD.

TITLE	SCREW CAP	SPEC. DWG.
MATERIAL	SEE ABOVE	DATE 2013.08.20
FINISH		DRAWN K.W
COLOR	SEE ABOVE	CHECK 
PART NUMBER SEE ABOVE	DRAWING NUMBER SCW-5	UNLESS OTHERWISE SPECIFIED TOLERANCE SEE ABOVE
SIZE A4	SCALE 2:1	UNIT mm
		REV A
		APPROVED 